



SOBHA ONE

SOBHA
REALTY



ONE

THE JOURNEY BEGINS

ONE that brings you
closer to nature



A place where you can take
one day at a time



ONE

BE ONESELF

It's one of a kind, like you



One where the world is
close yet far away

THE POWER OF ONE



*When imagination and vision
come together Life meets style.*

City and nature hum together,
Work & play find a balance and become One

ONE WAY: YOUR WAY

The best places are hidden in plain sight

Near the vital Ras Al Khor Road, Sobha One is a little world tucked away. Look to the north at the calming waters of the Creek as they look back. Further north in the skyline with panoramic views of The Burj Khalifa, Creek Tower to the Northeast and Downtown to the West.



ARRIVE & DEPART WITH GRACE

Sobha One is right near two new interchanges on Ras Al Khor Road. So, getting home has never been faster. With exits in both the West and East, a new planned metro line behind Sobha One, soar where you need to be on your terms.

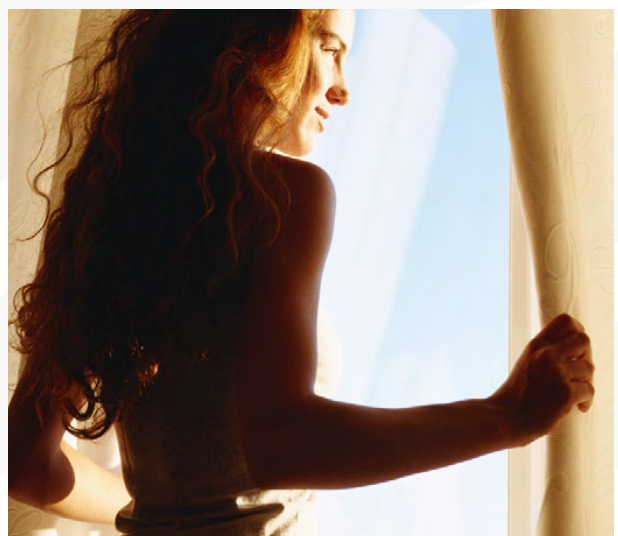




LIVING BY THE WATER

Imagine waking up each morning next to serene water. The sun glints off the water, casting a sparkling path across the ripples. A light breeze blows, rustling the leaves of the nearby trees.

It's yours to stroll down the pathway or sit peacefully watching the calm waters. Go on, spend lazy weekends lounging near the water, reading, and soaking up the sun.



ONE POINT OF VIEW: YOURS

With a canvas spread over 1.5 million square feet, its breathtaking views as far as your eye can see. Look around to views of Golf Course, calm water, iconic Burj Khalifa & Downtown. Every glance sets a different mood.



ONE

SPACE

Sobha One spreads its tapestry over five interlinked towers. Rising from 30 stories tall and hitting a crescendo of 65 stories, it's one note after another that sings in chorus with the skyline

With 1 to 4 bedroom apartments & 2 to 4 bedroom Duplex, it's a world of its own.



ONE FOR ALL ALL FOR ONE



*Life is too short to settle for anything less than
the best. At Sobha One, luxury living is a
natural choice.*

TEE OFF IN STYLE

The first of its kind in Dubai, a world class Pitch and Putt golf course featuring 18 holes of golf, each meticulously designed.

It is the perfect way to unwind after a long day at work. After all, there's nothing like sinking a long putt on a sun-drenched fairway. The clubhouse is appointed with upscale amenities and a patio overlooking the greens.



DINE BY THE WATERS

The food & beverage esplanade that borders the calm waters is also a feast for the palate to suit every taste and time.

Spread over almost half a kilometer, it offers fine restaurants for an intimate dinner, quick catch-up over a cup of coffee, or a power lunch.



SKY GARDEN

Rise high above and look at the stars. Soak in the stunning views of the city. Catch the sun rays when they rise and set. Do it all from the magnificent panoramic sky terrace in each tower



COURTYARD FOR THE SENSES



All the 5 Towers at Sobha One have interconnected four themed courtyards. As private outdoor retreats, these lush, landscaped spaces add to the overall aesthetic.

RELAX

In a fast-paced world, finding ways to relax is more important than ever. Take a leisurely stroll through the tree avenues, do yoga on the group decks, or stroll in the gardens. And when you need to refuel, enjoy a meal at the BBQ & dining areas or catch a movie under the stars on our cinema screen. There is something for everyone





REMEMBER

The family courtyard is a great way to spend quality time together. You can pack a picnic lunch and enjoy the beautiful weather. Or spending a day cooling off in the water, splashing with the little ones. So, come on down and make memories with your loved ones!





RECHARGE

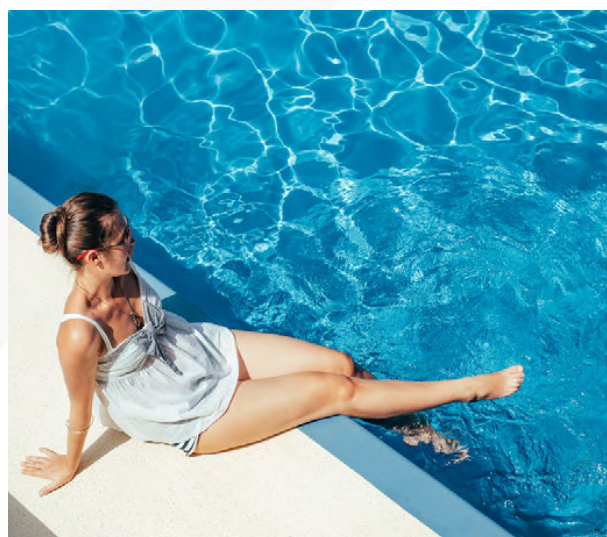
We believe that fitness should be fun! That's why we've created a unique courtyard that combines the best of gyms with exciting new indoor and outdoor features from static bikes, treadmills, circuit training areas and battle ropes. So sweat it out and be the best version of yourself.





REFRESH

This themed courtyard is the way to do just that after a long day. Step into the pool area, and the stress of daily life melts away. Feel your muscles loosening and your mind clearing as you swim laps. Close your eyes and let the warm sun wash over you, lulling you into a state of relaxation.





SOBHA ONE



FLEXIBLE PAYMENT PLAN

60%

During Construction

40%

On Completion

Grand 1 to 4 Bedroom apartments

ONE

awaits you...

LOCATION MAP



Sheikh Zayed Road

Burj Khalifa & Downtown Dubai

Business Bay

The Dubai Mall

Dubai Canal

The Dubai Frame

Sobha Hartland & 2 International Schools

Dubai International Airport

Ras Al Khor Wildlife Sanctuary

Dubai Creek

SOBHA ONE

Golf Course

Ras Al Khor Road



**RAS AL KHOR
WILDLIFE SANCTUARY**
05 MINUTES



**MEYDAN
RACE COURSE**
10 MINUTES



**SOBHA HARTLAND &
2 INTERNATIONAL SCHOOLS**
10 MINUTES



**DUBAI INTERNATIONAL
AIRPORT**
12 MINUTES



BUSINESS BAY
12 MINUTES



THE DUBAI MALL
15 MINUTES



**BURJ KHALIFA &
DOWNTOWN DUBAI**
15 MINUTES



DUBAI FRAME
15 MINUTES

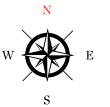


DUBAI OPERA
15 MINUTES

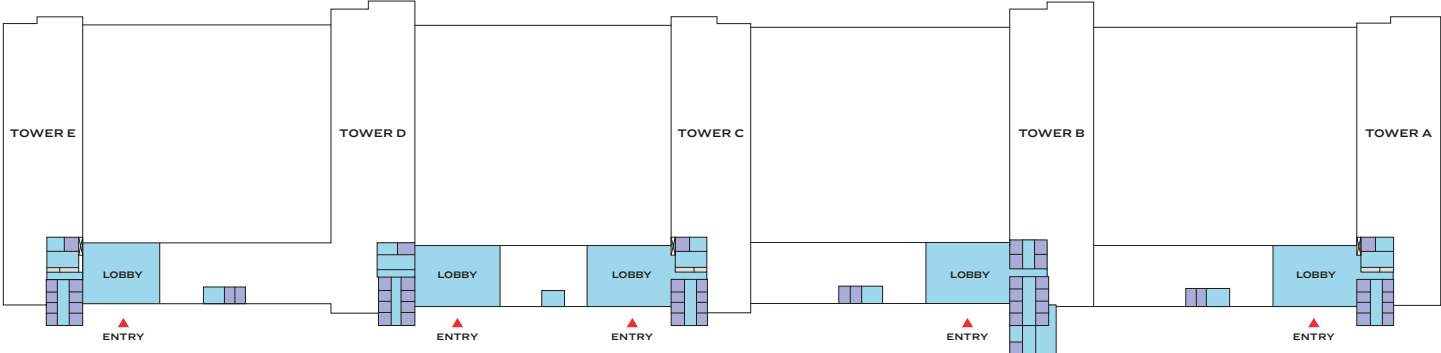


PALM JUMEIRAH
25 MINUTES

MASTER PLAN



GROUND FLOOR



TOWER A

UNIT PLAN LAYOUTS

2 BEDROOM APARTMENT

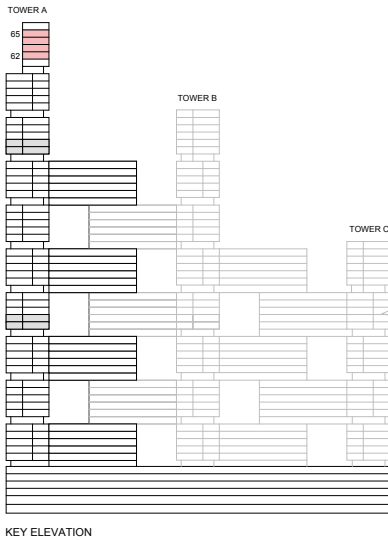
TYPE A (with powder room + balcony)

TOTAL SALEABLE AREA

SUITE = 1,034.63 SQ.FT.

BALCONY = 64.69 SQ.FT.

TOTAL = 1,099.32 SQ.FT.



List of unit numbers with this unit plan:

VIEWS

Ras Al Khor, Golf Course
A6201, A6301, A6401, A6501

Disclaimer: 1. All dimensions are in metric, measured to wall finishes. 2. All materials, dimensions & drawings are approximate. 3. Information is subject to change without notice, at developer's absolute discretion. 4. Actual area may vary from the stated area. 5. Drawing are not to scale. 6. All images used are for illustrative purpose only and do not represent the actual size, features, specifications, fittings and furnishings. 7. The developer reserves the right to make revisions/ alterations, at its absolute discretion, without any liability whatsoever.

2 BEDROOM APARTMENT

TYPE A (with powder room + balcony)

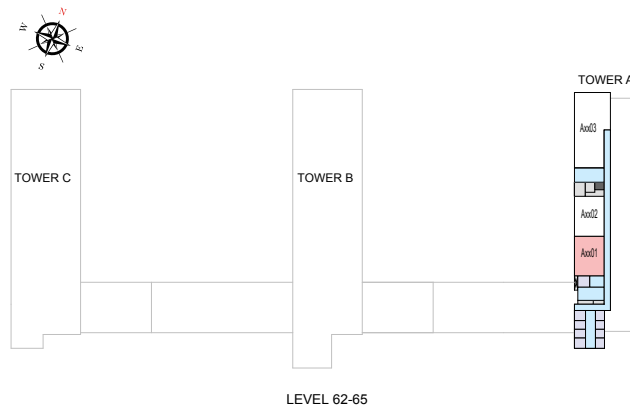
TOTAL SALEABLE AREA

SUITE = 1,034.63 SQ.FT.

BALCONY = 64.69 SQ.FT.

TOTAL = 1,099.32 SQ.FT.

 UNIT



List of unit numbers with this unit plan:

VIEWS

Ras Al Khor, Golf Course

A6201, A6301, A6401, A6501

Disclaimer: 1. All dimensions are in metric, measured to wall finishes. 2. All materials, dimensions & drawings are approximate. 3. Information is subject to change without notice, at developer's absolute discretion. 4. Actual area may vary from the stated area. 5. Drawing are not to scale. 6. All images used are for illustrative purpose only and do not represent the actual size, features, specifications, fittings and furnishings. 7. The developer reserves the right to make revisions/ alterations, at its absolute discretion, without any liability whatsoever.

2 BEDROOM APARTMENT

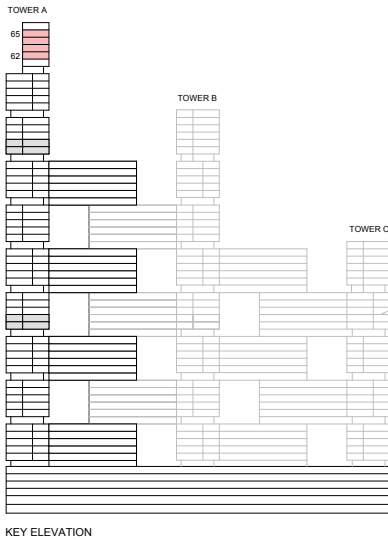
TYPE A (with powder room + balcony) VARIANT 1

TOTAL SALEABLE AREA

SUITE = 1,034.63 SQ.FT.

BALCONY = 64.69 SQ.FT.

TOTAL = 1,099.32 SQ.FT.



List of unit numbers with this unit plan:

VIEWS

Ras Al Khor, Golf Course

A6202, A6302, A6402, A6502

Disclaimer: 1. All dimensions are in metric, measured to wall finishes. 2. All materials, dimensions & drawings are approximate. 3. Information is subject to change without notice, at developer's absolute discretion. 4. Actual area may vary from the stated area. 5. Drawing are not to scale. 6. All images used are for illustrative purpose only and do not represent the actual size, features, specifications, fittings and furnishings. 7. The developer reserves the right to make revisions/ alterations, at its absolute discretion, without any liability whatsoever.

2 BEDROOM APARTMENT

TYPE A (with powder room + balcony) VARIANT 1

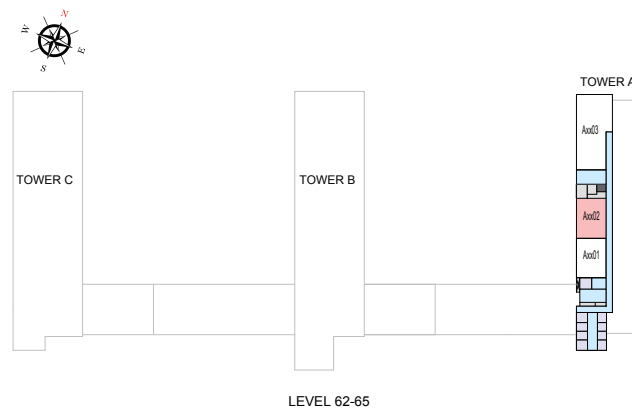
TOTAL SALEABLE AREA

SUITE = 1,034.63 SQ.FT.

BALCONY = 64.69 SQ.FT.

TOTAL = 1,099.32 SQ.FT.

 UNIT



List of unit numbers with this unit plan:

VIEWS

Ras Al Khor, Golf Course

A6202, A6302, A6402, A6502

Disclaimer: 1. All dimensions are in metric, measured to wall finishes. 2. All materials, dimensions & drawings are approximate. 3. Information is subject to change without notice, at developer's absolute discretion. 4. Actual area may vary from the stated area. 5. Drawing are not to scale. 6. All images used are for illustrative purpose only and do not represent the actual size, features, specifications, fittings and furnishings. 7. The developer reserves the right to make revisions/ alterations, at its absolute discretion, without any liability whatsoever.

2 BEDROOM APARTMENT

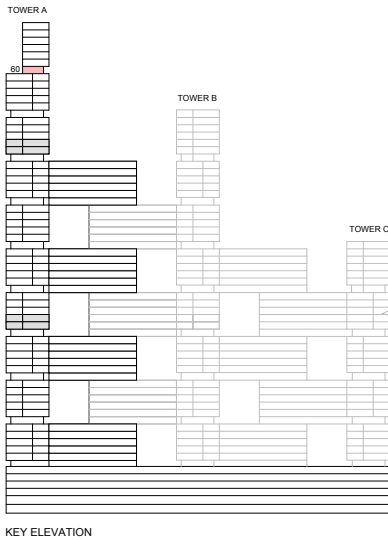
TYPE G (with powder room + yard)

TOTAL SALEABLE AREA

SUITE = 1,025.05 SQ.FT.

YARD = 184.82 SQ.FT.

TOTAL = 1,209.87 SQ.FT.



List of unit numbers with this unit plan:

VIEWS

Ras Al Khor, Golf Course
A6001

Disclaimer: 1. All dimensions are in metric, measured to wall finishes. 2. All materials, dimensions & drawings are approximate. 3. Information is subject to change without notice, at developer's absolute discretion. 4. Actual area may vary from the stated area. 5. Drawing are not to scale. 6. All images used are for illustrative purpose only and do not represent the actual size, features, specifications, fittings and furnishings. 7. The developer reserves the right to make revisions/ alterations, at its absolute discretion, without any liability whatsoever.

2 BEDROOM APARTMENT

TYPE G (with powder room + yard)

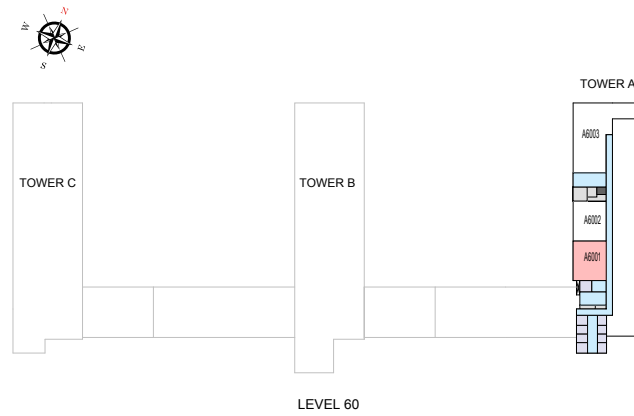
TOTAL SALEABLE AREA

SUITE = 1,025.05 SQ.FT.

YARD = 184.82 SQ.FT.

TOTAL = 1,209.87 SQ.FT.

 UNIT



List of unit numbers with this unit plan:

VIEWS

Ras Al Khor, Golf Course

A6001

Disclaimer: 1. All dimensions are in metric, measured to wall finishes. 2. All materials, dimensions & drawings are approximate. 3. Information is subject to change without notice, at developer's absolute discretion. 4. Actual area may vary from the stated area. 5. Drawing are not to scale. 6. All images used are for illustrative purpose only and do not represent the actual size, features, specifications, fittings and furnishings. 7. The developer reserves the right to make revisions/ alterations, at its absolute discretion, without any liability whatsoever.

2 BEDROOM APARTMENT

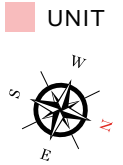
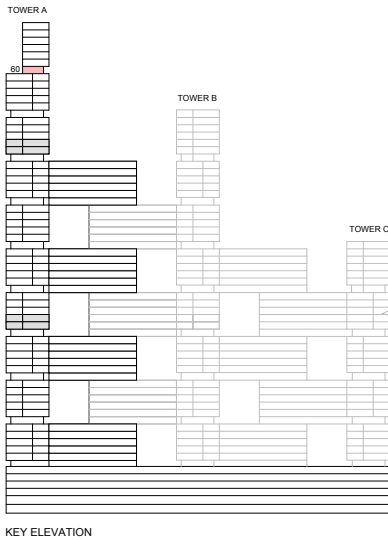
TYPE G (with powder room + yard) VARIANT 1

TOTAL SALEABLE AREA

SUITE = 1,025.05 SQ.FT.

YARD = 184.82 SQ.FT.

TOTAL = 1,209.87 SQ.FT.



List of unit numbers with this unit plan:

VIEWS

Ras Al Khor, Golf Course
A6002

Disclaimer: 1. All dimensions are in metric, measured to wall finishes. 2. All materials, dimensions & drawings are approximate. 3. Information is subject to change without notice, at developer's absolute discretion. 4. Actual area may vary from the stated area. 5. Drawing are not to scale. 6. All images used are for illustrative purpose only and do not represent the actual size, features, specifications, fittings and furnishings. 7. The developer reserves the right to make revisions/ alterations, at its absolute discretion, without any liability whatsoever.

2 BEDROOM APARTMENT

TYPE G (with powder room + yard) VARIANT 1

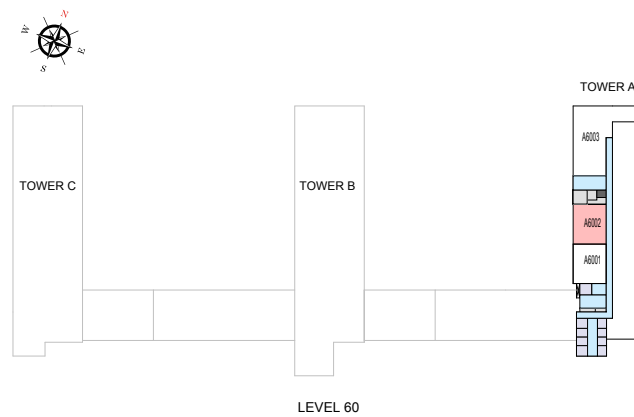
TOTAL SALEABLE AREA

SUITE = 1,025.05 SQ.FT.

YARD = 184.82 SQ.FT.

TOTAL = 1,209.87 SQ.FT.

 UNIT



List of unit numbers with this unit plan:

VIEWS

Ras Al Khor, Golf Course
A6002

Disclaimer: 1. All dimensions are in metric, measured to wall finishes. 2. All materials, dimensions & drawings are approximate. 3. Information is subject to change without notice, at developer's absolute discretion. 4. Actual area may vary from the stated area. 5. Drawing are not to scale. 6. All images used are for illustrative purpose only and do not represent the actual size, features, specifications, fittings and furnishings. 7. The developer reserves the right to make revisions/ alterations, at its absolute discretion, without any liability whatsoever.

2 BEDROOM APARTMENT

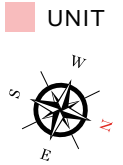
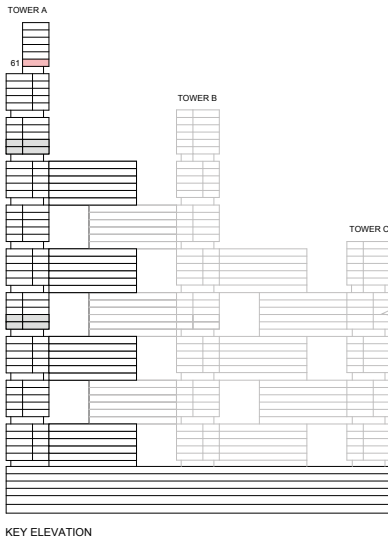
TYPE P (with powder room + yard)

TOTAL SALEABLE AREA

SUITE = 1,034.61 SQ.FT.

YARD = 178.41 SQ.FT.

TOTAL = 1,213.02 SQ.FT.



List of unit numbers with this unit plan:

VIEWS

Ras Al Khor, Golf Course
A6101

Disclaimer: 1. All dimensions are in metric, measured to wall finishes. 2. All materials, dimensions & drawings are approximate. 3. Information is subject to change without notice, at developer's absolute discretion. 4. Actual area may vary from the stated area. 5. Drawing are not to scale. 6. All images used are for illustrative purpose only and do not represent the actual size, features, specifications, fittings and furnishings. 7. The developer reserves the right to make revisions/ alterations, at its absolute discretion, without any liability whatsoever.

2 BEDROOM APARTMENT

TYPE P (with powder room + yard)

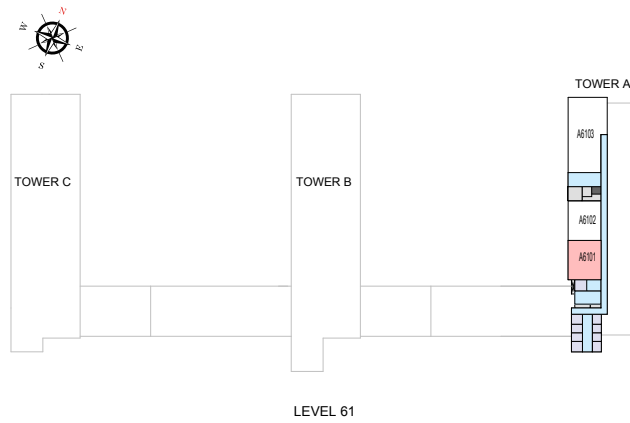
TOTAL SALEABLE AREA

SUITE = 1,034.61 SQ.FT.

YARD = 178.41 SQ.FT.

TOTAL = 1,213.02 SQ.FT.

 UNIT



List of unit numbers with this unit plan:

VIEWS

Ras Al Khor, Golf Course

A6101

Disclaimer: 1. All dimensions are in metric, measured to wall finishes. 2. All materials, dimensions & drawings are approximate. 3. Information is subject to change without notice, at developer's absolute discretion. 4. Actual area may vary from the stated area. 5. Drawing are not to scale. 6. All images used are for illustrative purpose only and do not represent the actual size, features, specifications, fittings and furnishings. 7. The developer reserves the right to make revisions/ alterations, at its absolute discretion, without any liability whatsoever.

2 BEDROOM APARTMENT

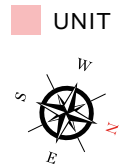
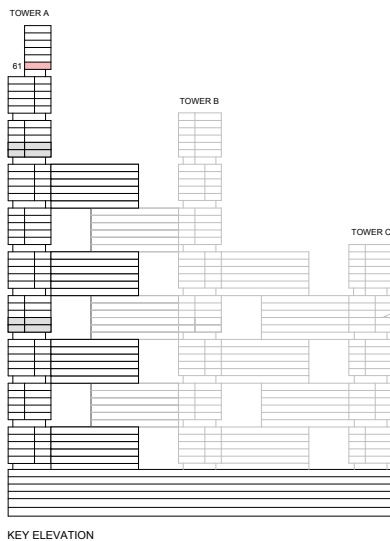
TYPE P (with powder room + yard) VARIANT 1

TOTAL SALEABLE AREA

SUITE = 1,034.61 SQ.FT.

YARD = 178.41 SQ.FT.

TOTAL = 1,213.02 SQ.FT.



List of unit numbers with this unit plan:

VIEWS

Ras Al Khor, Golf Course
A6102

Disclaimer: 1. All dimensions are in metric, measured to wall finishes. 2. All materials, dimensions & drawings are approximate. 3. Information is subject to change without notice, at developer's absolute discretion. 4. Actual area may vary from the stated area. 5. Drawing are not to scale. 6. All images used are for illustrative purpose only and do not represent the actual size, features, specifications, fittings and furnishings. 7. The developer reserves the right to make revisions/ alterations, at its absolute discretion, without any liability whatsoever.

2 BEDROOM APARTMENT

TYPE P (with powder room + yard) VARIANT 1

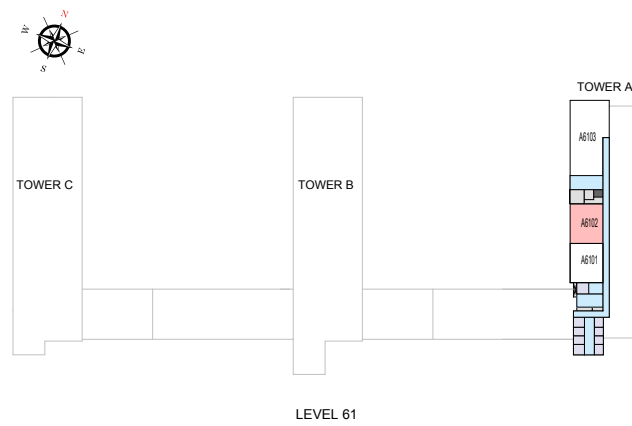
TOTAL SALEABLE AREA

SUITE = 1,034.61 SQ.FT.

YARD = 178.41 SQ.FT.

TOTAL = 1,213.02 SQ.FT.

 UNIT



List of unit numbers with this unit plan:

VIEWS

Ras Al Khor, Golf Course

A6102

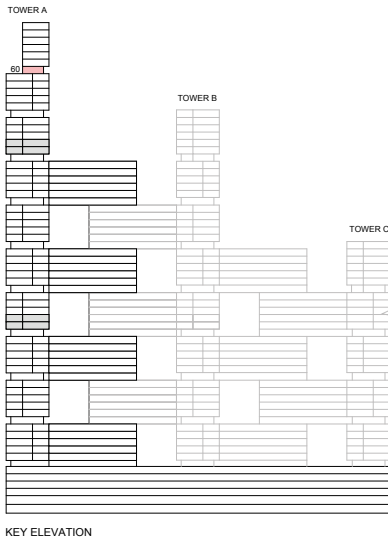
Disclaimer: 1. All dimensions are in metric, measured to wall finishes. 2. All materials, dimensions & drawings are approximate. 3. Information is subject to change without notice, at developer's absolute discretion. 4. Actual area may vary from the stated area. 5. Drawing are not to scale. 6. All images used are for illustrative purpose only and do not represent the actual size, features, specifications, fittings and furnishings. 7. The developer reserves the right to make revisions/ alterations, at its absolute discretion, without any liability whatsoever.

3 BEDROOM APARTMENT

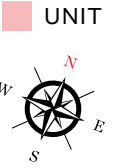
TYPE G (with maid room, powder room + yard and private terrace)

TOTAL SALEABLE AREA

SUITE = 1,823.19 SQ.FT.
 YARD AND PRIVATE TERRACE = 1,350.12 SQ.FT.
 TOTAL = 3,173.31 SQ.FT.



KEY ELEVATION



List of unit numbers with this unit plan:

VIEWS

Downtown, Ras Al Khor, Creek, Golf Course, water body
 A6003

Disclaimer: 1. All dimensions are in metric, measured to wall finishes. 2. All materials, dimensions & drawings are approximate. 3. Information is subject to change without notice, at developer's absolute discretion. 4. Actual area may vary from the stated area. 5. Drawing are not to scale. 6. All images used are for illustrative purpose only and do not represent the actual size, features, specifications, fittings and furnishings. 7. The developer reserves the right to make revisions/ alterations, at its absolute discretion, without any liability whatsoever.

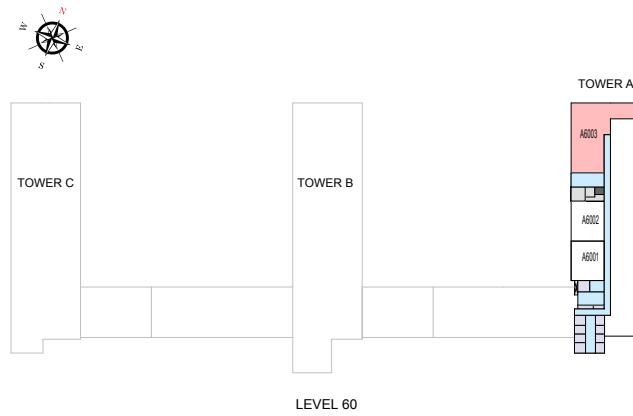
3 BEDROOM APARTMENT

TYPE G (with maid room, powder room + yard and private terrace)

TOTAL SALEABLE AREA

SUITE = 1,823.19 SQ.FT.
YARD AND PRIVATE TERRACE = 1,350.12 SQ.FT.
TOTAL = 3,173.31 SQ.FT.

 UNIT



List of unit numbers with this unit plan:

VIEWS

Downtown, Ras Al Khor, Creek, Golf Course, water body
A6003

Disclaimer: 1. All dimensions are in metric, measured to wall finishes. 2. All materials, dimensions & drawings are approximate. 3. Information is subject to change without notice, at developer's absolute discretion. 4. Actual area may vary from the stated area. 5. Drawing are not to scale. 6. All images used are for illustrative purpose only and do not represent the actual size, features, specifications, fittings and furnishings. 7. The developer reserves the right to make revisions/ alterations, at its absolute discretion, without any liability whatsoever.

4 BEDROOM APARTMENT

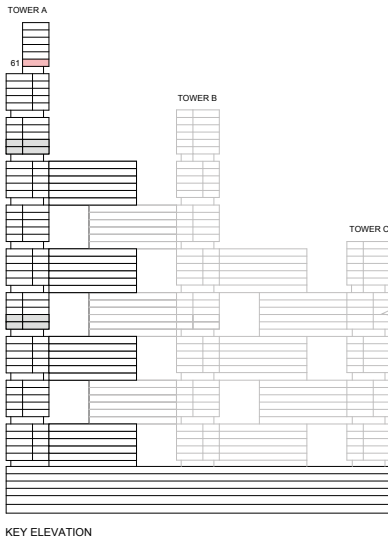
TYPE C (with maid room, powder room + yard)

TOTAL SALEABLE AREA

SUITE = 2,129.10 SQ.FT.

YARD = 469.41 SQ.FT.

TOTAL = 2,598.51 SQ.FT.



List of unit numbers with this unit plan:

VIEWS

Downtown, Ras Al Khor, Creek, Golf Course, water body
A6103

Disclaimer: 1. All dimensions are in metric, measured to wall finishes. 2. All materials, dimensions & drawings are approximate. 3. Information is subject to change without notice, at developer's absolute discretion. 4. Actual area may vary from the stated area. 5. Drawing are not to scale. 6. All images used are for illustrative purpose only and do not represent the actual size, features, specifications, fittings and furnishings. 7. The developer reserves the right to make revisions/ alterations, at its absolute discretion, without any liability whatsoever.

4 BEDROOM APARTMENT

TYPE C (with maid room, powder room + yard)

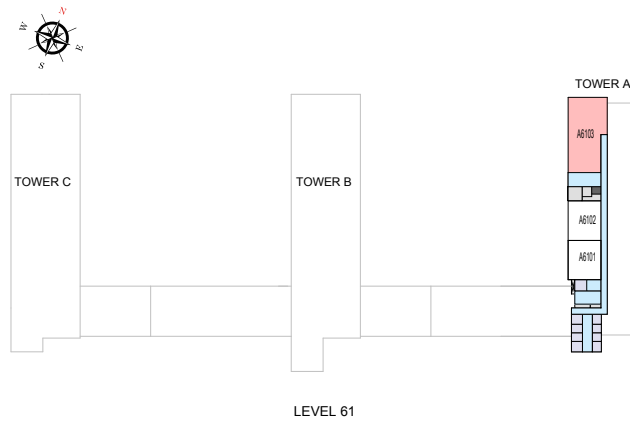
TOTAL SALEABLE AREA

SUITE = 2,129.10 SQ.FT.

YARD = 469.41 SQ.FT.

TOTAL = 2,598.51 SQ.FT.

 UNIT



List of unit numbers with this unit plan:

VIEWS

Downtown, Ras Al Khor, Creek, Golf Course, water body
A6103

Disclaimer: 1. All dimensions are in metric, measured to wall finishes. 2. All materials, dimensions & drawings are approximate. 3. Information is subject to change without notice, at developer's absolute discretion. 4. Actual area may vary from the stated area. 5. Drawing are not to scale. 6. All images used are for illustrative purpose only and do not represent the actual size, features, specifications, fittings and furnishings. 7. The developer reserves the right to make revisions/ alterations, at its absolute discretion, without any liability whatsoever.

4 BEDROOM APARTMENT

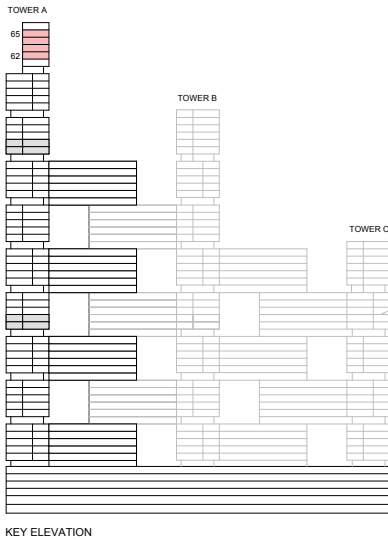
TYPE D (with maid room, powder room + balcony)

TOTAL SALEABLE AREA

SUITE = 2,128.78 SQ.FT.

BALCONY = 196.33 SQ.FT.

TOTAL = 2,325.11 SQ.FT.



List of unit numbers with this unit plan:

VIEWS

Downtown, Ras Al Khor, Creek, Golf Course, water body
A6203, A6303, A6403, A6503

Disclaimer: 1. All dimensions are in metric, measured to wall finishes. 2. All materials, dimensions & drawings are approximate. 3. Information is subject to change without notice, at developer's absolute discretion. 4. Actual area may vary from the stated area. 5. Drawing are not to scale. 6. All images used are for illustrative purpose only and do not represent the actual size, features, specifications, fittings and furnishings. 7. The developer reserves the right to make revisions/ alterations, at its absolute discretion, without any liability whatsoever.

4 BEDROOM APARTMENT

TYPE D (with maid room, powder room + balcony)

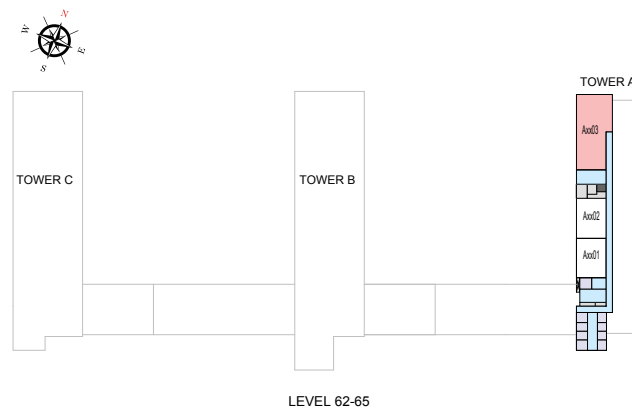
TOTAL SALEABLE AREA

SUITE = 2,128.78 SQ.FT.

BALCONY = 196.33 SQ.FT.

TOTAL = 2,325.11 SQ.FT.

 UNIT



List of unit numbers with this unit plan:

VIEWS

Downtown, Ras Al Khor, Creek, Golf Course, water body

A6203, A6303, A6403, A6503

Disclaimer: 1. All dimensions are in metric, measured to wall finishes. 2. All materials, dimensions & drawings are approximate. 3. Information is subject to change without notice, at developer's absolute discretion. 4. Actual area may vary from the stated area. 5. Drawing are not to scale. 6. All images used are for illustrative purpose only and do not represent the actual size, features, specifications, fittings and furnishings. 7. The developer reserves the right to make revisions/ alterations, at its absolute discretion, without any liability whatsoever.

TOWER A

UNIT PLAN LAYOUTS
(LINK UNITS)

2 BEDROOM LINK APARTMENT

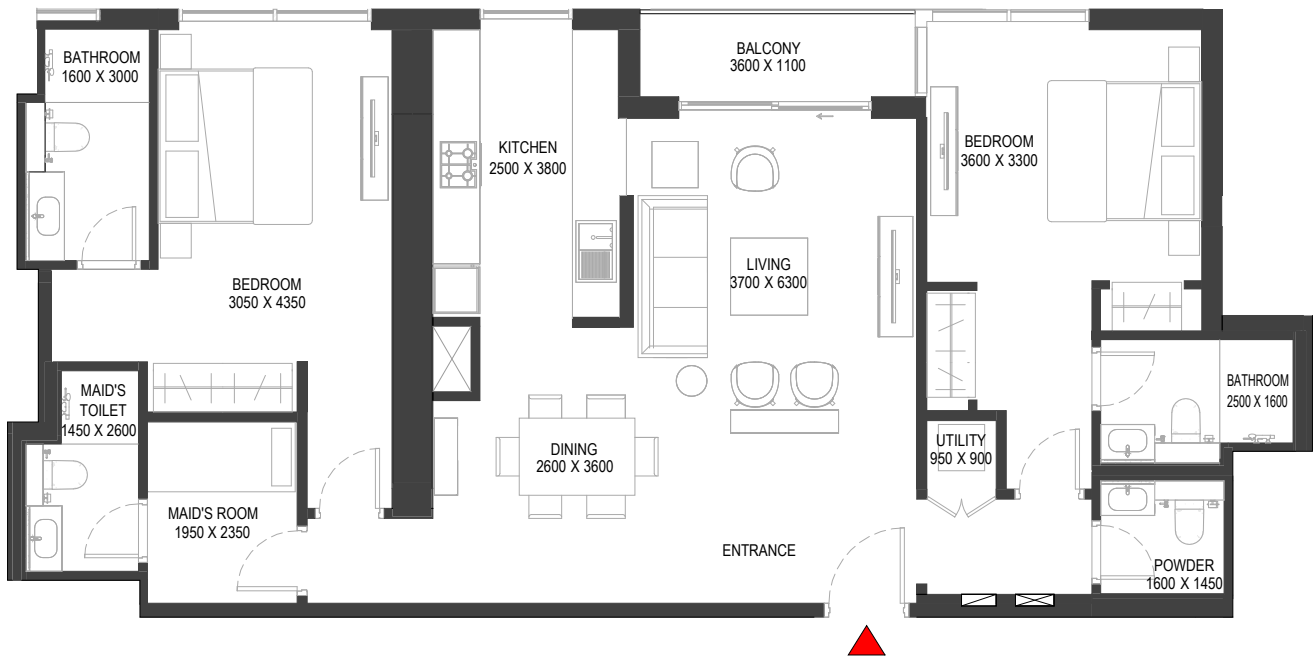
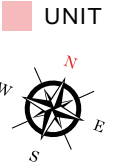
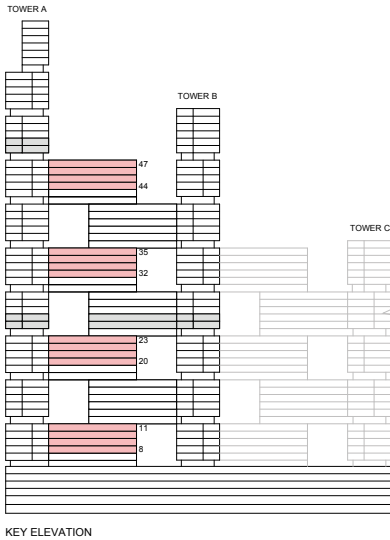
TYPE D (with maid room, powder room + balcony) VARIANT 2

TOTAL SALEABLE AREA

SUITE = 1,262.39 SQ.FT.

BALCONY = 49.73 SQ.FT.

TOTAL = 1,312.12 SQ.FT.



List of unit numbers with this unit plan:

VIEWS

Ras Al Khor, Amenities
A810, A910

Ras Al Khor, Golf Course, Amenities
A1010, A1110, A2010, A2110, A2210, A2310

Ras Al Khor, Golf Course
A3210, A3310, A3410, A3510, A4410, A4510, A4610, A4710

Disclaimer: 1. All dimensions are in metric, measured to wall finishes. 2. All materials, dimensions & drawings are approximate. 3. Information is subject to change without notice, at developer's absolute discretion. 4. Actual area may vary from the stated area. 5. Drawing are not to scale. 6. All images used are for illustrative purpose only and do not represent the actual size, features, specifications, fittings and furnishings. 7. The developer reserves the right to make revisions/ alterations, at its absolute discretion, without any liability whatsoever.

2 BEDROOM LINK APARTMENT

TYPE D (with maid room, powder room + balcony) VARIANT 2

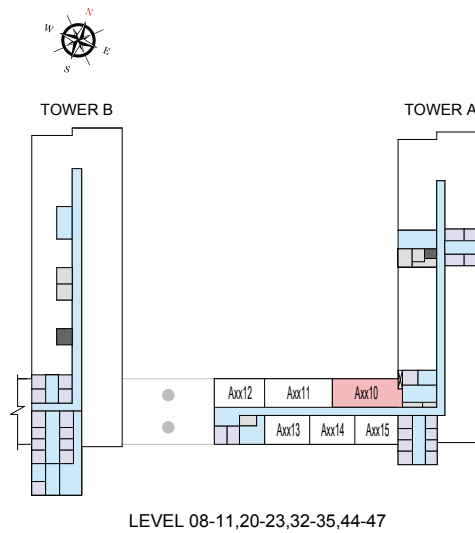
TOTAL SALEABLE AREA

SUITE = 1,262.39 SQ.FT.

BALCONY = 49.73 SQ.FT.

TOTAL = 1,312.12 SQ.FT.

UNIT



List of unit numbers with this unit plan:

VIEWS

Ras Al Khor, Amenities
A810, A910

Ras Al Khor, Golf Course, Amenities
A1010, A1110, A2010, A2110, A2210, A2310

Ras Al Khor, Golf Course
A3210, A3310, A3410, A3510, A4410, A4510, A4610, A4710

Disclaimer: 1. All dimensions are in metric, measured to wall finishes. 2. All materials, dimensions & drawings are approximate. 3. Information is subject to change without notice, at developer's absolute discretion. 4. Actual area may vary from the stated area. 5. Drawing are not to scale. 6. All images used are for illustrative purpose only and do not represent the actual size, features, specifications, fittings and furnishings. 7. The developer reserves the right to make revisions/ alterations, at its absolute discretion, without any liability whatsoever.

2 BEDROOM LINK APARTMENT

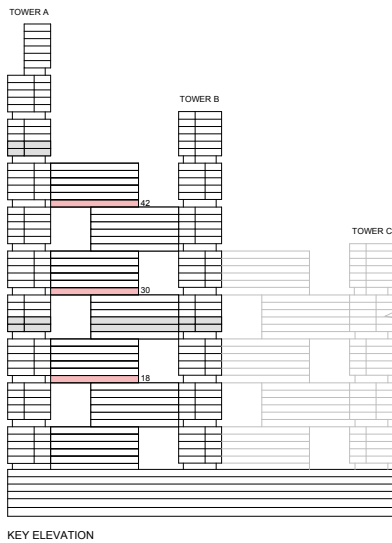
TYPE H (with maid room, powder room + yard) VARIANT 2

TOTAL SALEABLE AREA

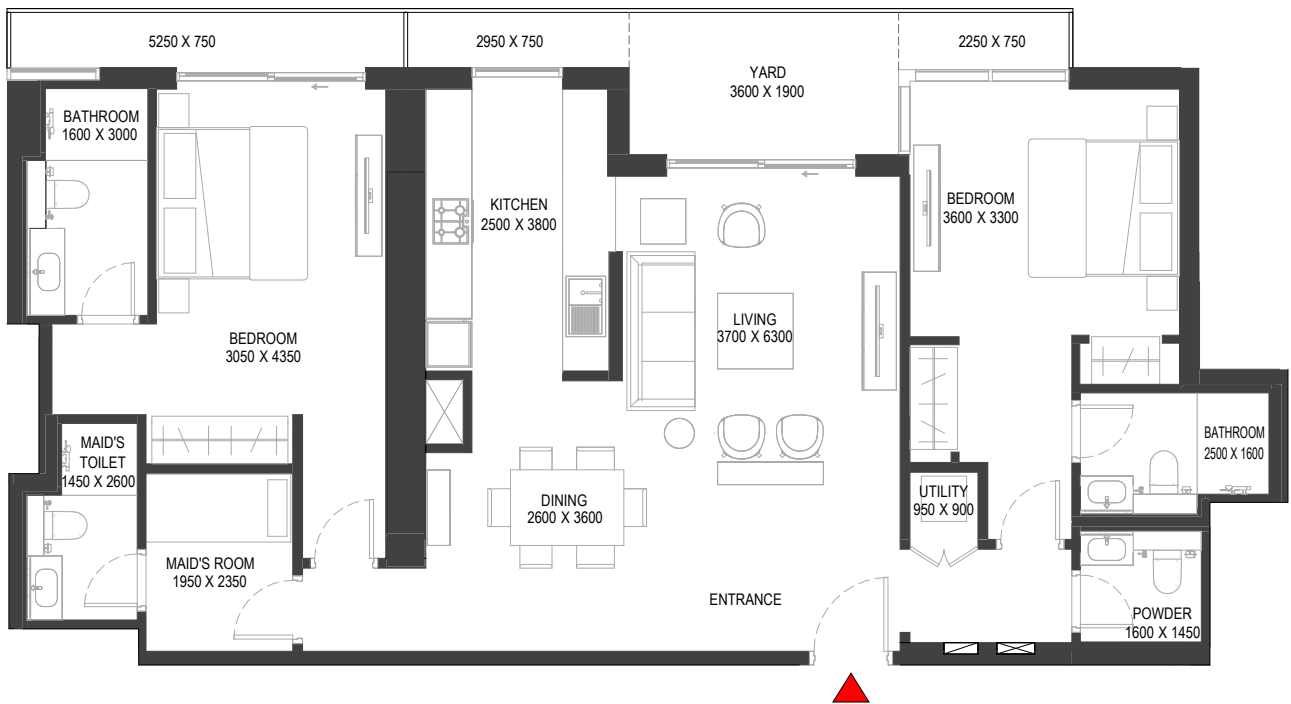
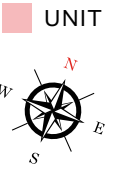
SUITE = 1,262.39 SQ.FT.

YARD = 175.02 SQ.FT.

TOTAL = 1,437.41 SQ.FT.



KEY ELEVATION



List of unit numbers with this unit plan:

VIEWS

Ras Al Khor, Golf Course, Amenities

A1810

Ras Al Khor, Golf Course

A3010, A4210

Disclaimer: 1. All dimensions are in metric, measured to wall finishes. 2. All materials, dimensions & drawings are approximate. 3. Information is subject to change without notice, at developer's absolute discretion. 4. Actual area may vary from the stated area. 5. Drawing are not to scale. 6. All images used are for illustrative purpose only and do not represent the actual size, features, specifications, fittings and furnishings. 7. The developer reserves the right to make revisions/ alterations, at its absolute discretion, without any liability whatsoever.

2 BEDROOM LINK APARTMENT

TYPE H (with maid room, powder room + yard) VARIANT 2

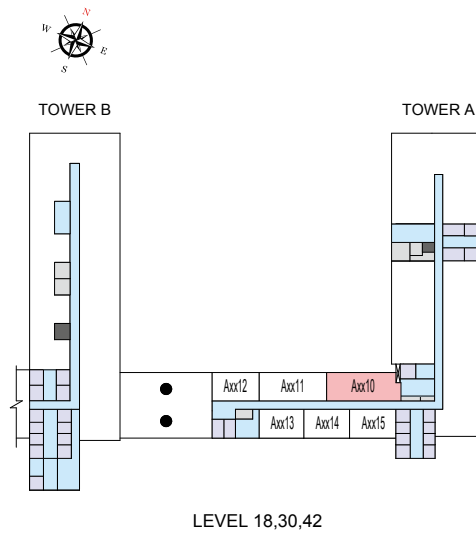
TOTAL SALEABLE AREA

SUITE = 1,262.39 SQ.FT.

YARD = 175.02 SQ.FT.

TOTAL = 1,437.41 SQ.FT.

 UNIT



LEVEL 18,30,42

List of unit numbers with this unit plan:

VIEWS

Ras Al Khor, Golf Course, Amenities

A1810

Ras Al Khor, Golf Course

A3010, A4210

Disclaimer: 1. All dimensions are in metric, measured to wall finishes. 2. All materials, dimensions & drawings are approximate. 3. Information is subject to change without notice, at developer's absolute discretion. 4. Actual area may vary from the stated area. 5. Drawing are not to scale. 6. All images used are for illustrative purpose only and do not represent the actual size, features, specifications, fittings and furnishings. 7. The developer reserves the right to make revisions/ alterations, at its absolute discretion, without any liability whatsoever.

2 BEDROOM LINK APARTMENT

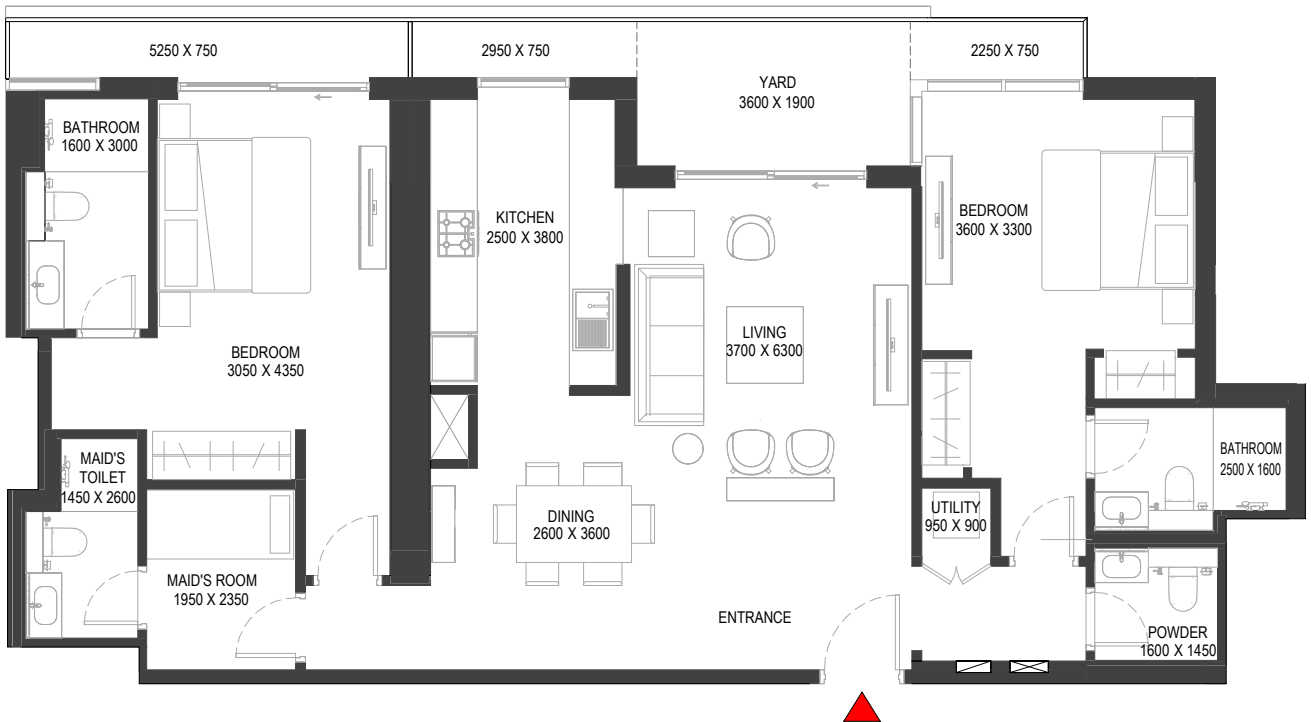
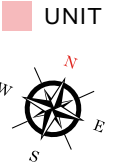
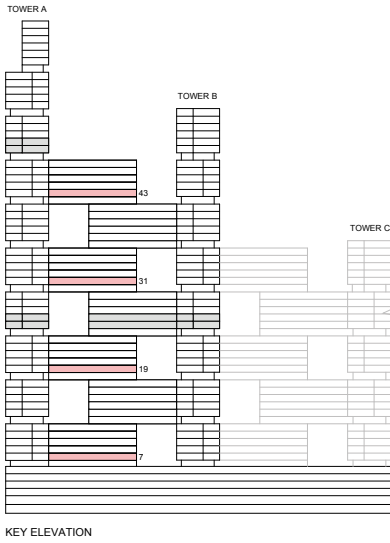
TYPE M (with maid room, powder room + yard) VARIANT 2

TOTAL SALEABLE AREA

SUITE = 1,262.39 SQ.FT.

YARD = 175.02 SQ.FT.

TOTAL = 1,437.41 SQ.FT.



List of unit numbers with this unit plan:

VIEWS

Ras Al Khor, Amenities
A710

Ras Al Khor, Golf Course, Amenities
A1910

Ras Al Khor, Golf Course
A3110, A4310

Disclaimer: 1. All dimensions are in metric, measured to wall finishes. 2. All materials, dimensions & drawings are approximate. 3. Information is subject to change without notice, at developer's absolute discretion. 4. Actual area may vary from the stated area. 5. Drawing are not to scale. 6. All images used are for illustrative purpose only and do not represent the actual size, features, specifications, fittings and furnishings. 7. The developer reserves the right to make revisions/ alterations, at its absolute discretion, without any liability whatsoever.

2 BEDROOM LINK APARTMENT

TYPE M (with maid room, powder room + yard) VARIANT 2

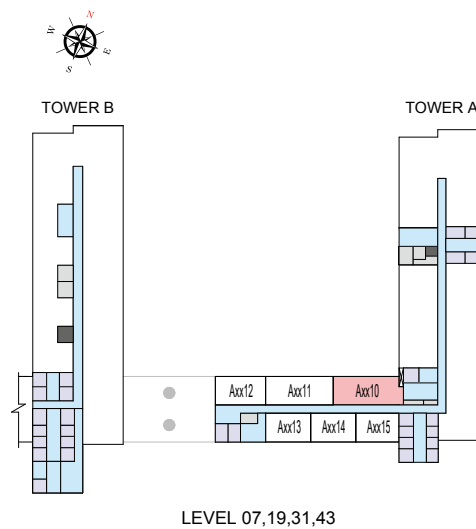
TOTAL SALEABLE AREA

SUITE = 1,262.39 SQ.FT.

YARD = 175.02 SQ.FT.

TOTAL = 1,437.41 SQ.FT.

 UNIT



List of unit numbers with this unit plan:

VIEWS

Ras Al Khor, Amenities
A710

Ras Al Khor, Golf Course, Amenities
A1910

Ras Al Khor, Golf Course
A3110, A4310

Disclaimer: 1. All dimensions are in metric, measured to wall finishes. 2. All materials, dimensions & drawings are approximate. 3. Information is subject to change without notice, at developer's absolute discretion. 4. Actual area may vary from the stated area. 5. Drawing are not to scale. 6. All images used are for illustrative purpose only and do not represent the actual size, features, specifications, fittings and furnishings. 7. The developer reserves the right to make revisions/ alterations, at its absolute discretion, without any liability whatsoever.

TOWER B

UNIT PLAN LAYOUTS

1.5 BEDROOM APARTMENT

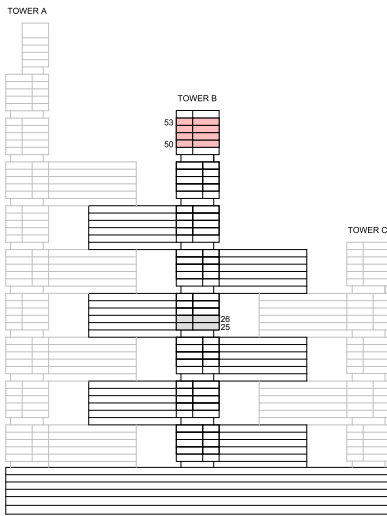
TYPE B (with study room + balcony)

TOTAL SALEABLE AREA

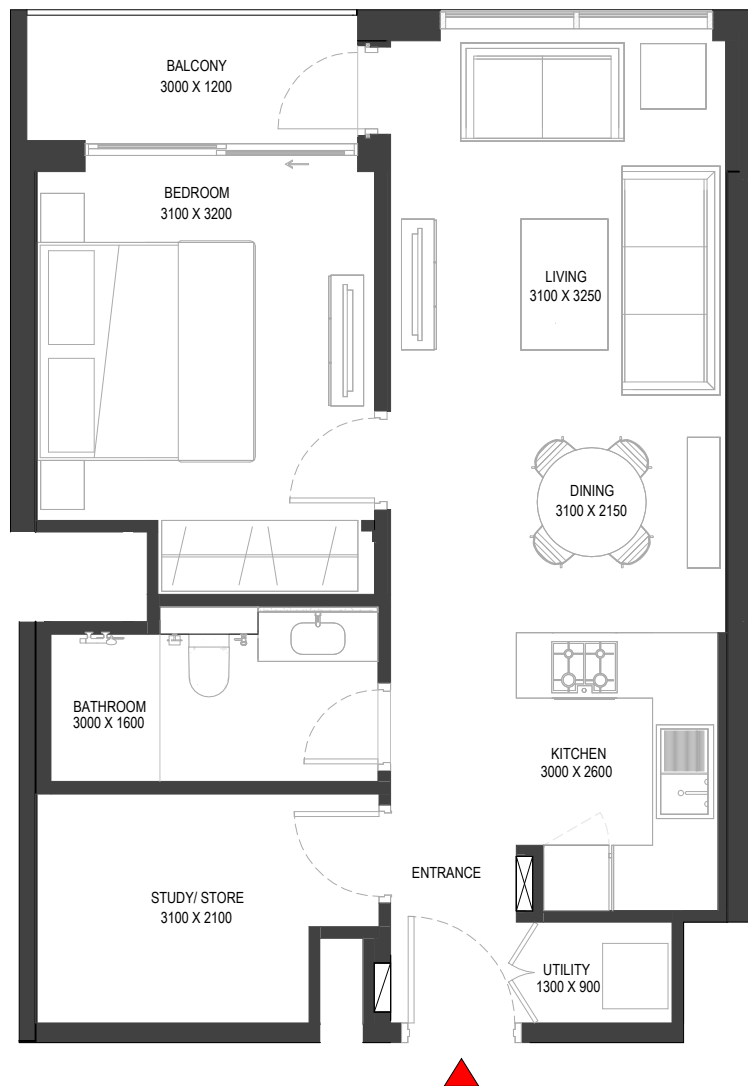
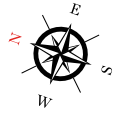
SUITE = 619.57 SQ.FT.

BALCONY = 45.96 SQ.FT.

TOTAL = 665.53 SQ.FT.



UNIT



List of unit numbers with this unit plan:

VIEWS

Golf Course, Creek

B5014, B5114, B5214, B5314

Disclaimer: 1. All dimensions are in metric, measured to wall finishes. 2. All materials, dimensions & drawings are approximate. 3. Information is subject to change without notice, at developer's absolute discretion. 4. Actual area may vary from the stated area. 5. Drawing are not to scale. 6. All images used are for illustrative purpose only and do not represent the actual size, features, specifications, fittings and furnishings. 7. The developer reserves the right to make revisions/ alterations, at its absolute discretion, without any liability whatsoever.

1.5 BEDROOM APARTMENT

TYPE B (with study room + balcony)

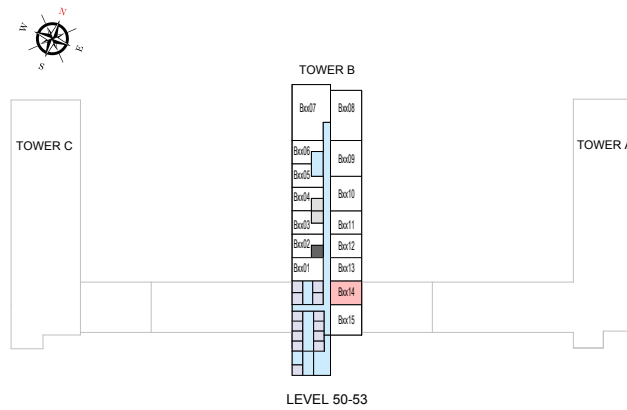
TOTAL SALEABLE AREA

SUITE = 619.57 SQ.FT.

BALCONY = 45.96 SQ.FT.

TOTAL = 665.53 SQ.FT.

 UNIT



List of unit numbers with this unit plan:

VIEWS

Golf Course, Creek

B5014, B5114, B5214, B5314

Disclaimer: 1. All dimensions are in metric, measured to wall finishes. 2. All materials, dimensions & drawings are approximate. 3. Information is subject to change without notice, at developer's absolute discretion. 4. Actual area may vary from the stated area. 5. Drawing are not to scale. 6. All images used are for illustrative purpose only and do not represent the actual size, features, specifications, fittings and furnishings. 7. The developer reserves the right to make revisions/ alterations, at its absolute discretion, without any liability whatsoever.

1.5 BEDROOM APARTMENT

TYPE D (with study room + yard) VARIANT 2

TOTAL SALEABLE AREA

SUITE = 616.02 SQ.FT.

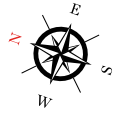
YARD = 113.24 SQ.FT.

TOTAL = 792.26 SQ.FT.



KEY ELEVATION

UNIT



List of unit numbers with this unit plan:

VIEWS

Golf Course, Creek
B4814

Disclaimer: 1. All dimensions are in metric, measured to wall finishes. 2. All materials, dimensions & drawings are approximate. 3. Information is subject to change without notice, at developer's absolute discretion. 4. Actual area may vary from the stated area. 5. Drawing are not to scale. 6. All images used are for illustrative purpose only and do not represent the actual size, features, specifications, fittings and furnishings. 7. The developer reserves the right to make revisions/ alterations, at its absolute discretion, without any liability whatsoever.

1.5 BEDROOM APARTMENT

TYPE D (with study room + yard) VARIANT 2

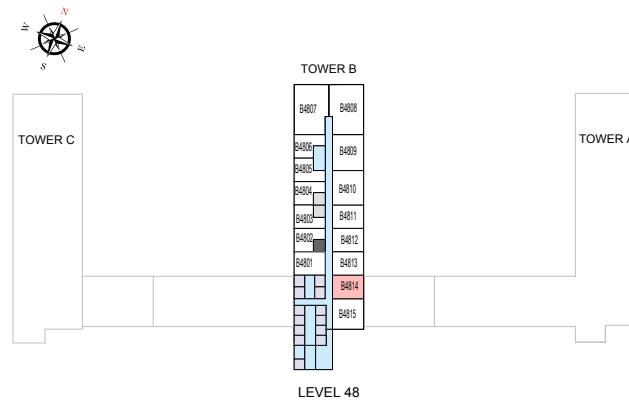
TOTAL SALEABLE AREA

SUITE = 616.02 SQ.FT.

YARD = 113.24 SQ.FT.

TOTAL = 792.26 SQ.FT.

 UNIT



List of unit numbers with this unit plan:

VIEWS

Golf Course, Creek

B4814

Disclaimer: 1. All dimensions are in metric, measured to wall finishes. 2. All materials, dimensions & drawings are approximate. 3. Information is subject to change without notice, at developer's absolute discretion. 4. Actual area may vary from the stated area. 5. Drawing are not to scale. 6. All images used are for illustrative purpose only and do not represent the actual size, features, specifications, fittings and furnishings. 7. The developer reserves the right to make revisions/ alterations, at its absolute discretion, without any liability whatsoever.

1.5 BEDROOM APARTMENT

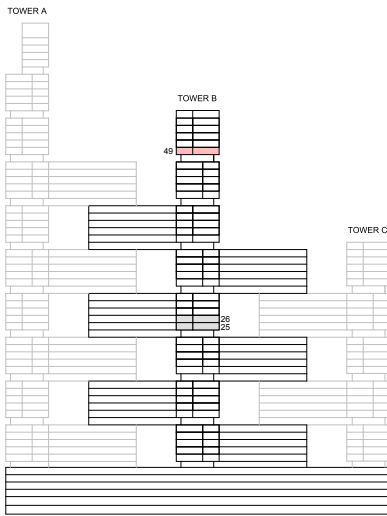
TYPE F (with study room + yard) VARIANT 2

TOTAL SALEABLE AREA

SUITE = 619.57 SQ.FT.

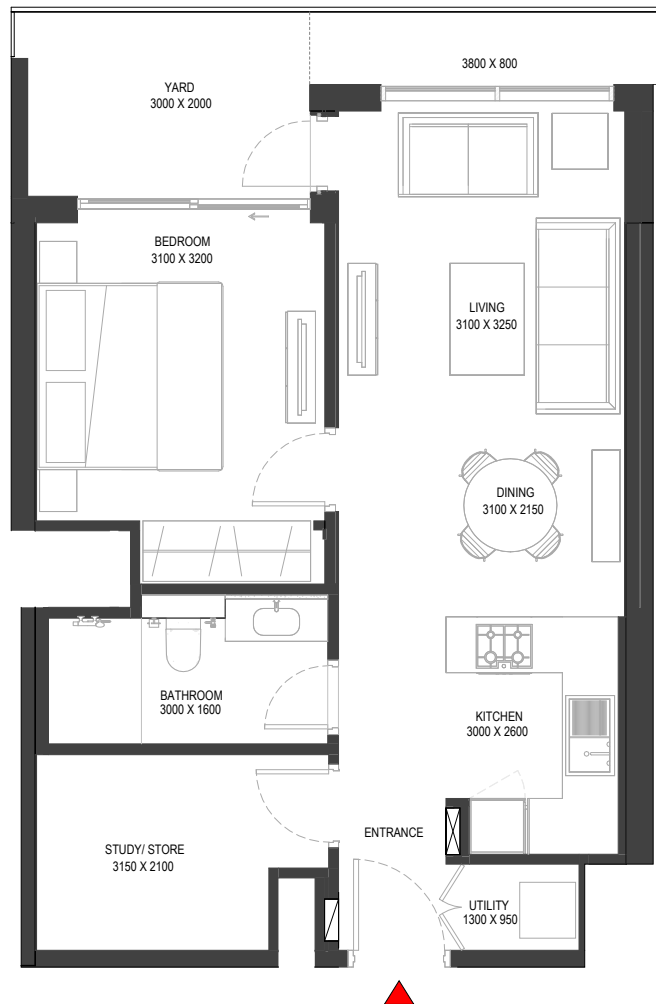
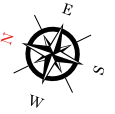
YARD = 109.68 SQ.FT.

TOTAL = 729.25 SQ.FT.



KEY ELEVATION

UNIT



List of unit numbers with this unit plan:

VIEWS

Golf Course, Creek
B4914

Disclaimer: 1. All dimensions are in metric, measured to wall finishes. 2. All materials, dimensions & drawings are approximate. 3. Information is subject to change without notice, at developer's absolute discretion. 4. Actual area may vary from the stated area. 5. Drawing are not to scale. 6. All images used are for illustrative purpose only and do not represent the actual size, features, specifications, fittings and furnishings. 7. The developer reserves the right to make revisions/ alterations, at its absolute discretion, without any liability whatsoever.

1.5 BEDROOM APARTMENT

TYPE F (with study room + yard) VARIANT 2

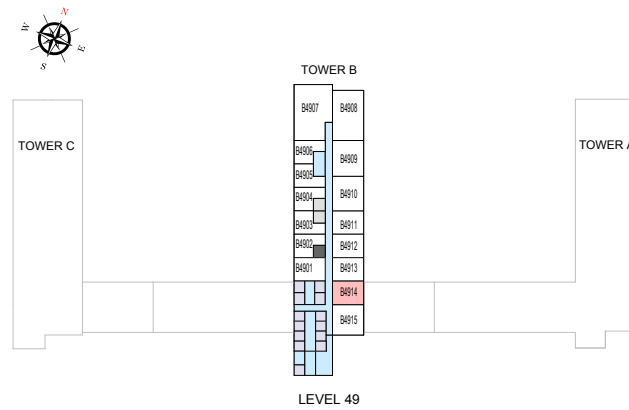
TOTAL SALEABLE AREA

SUITE = 619.57 SQ.FT.

YARD = 109.68 SQ.FT.

TOTAL = 729.25 SQ.FT.

 UNIT



List of unit numbers with this unit plan:

VIEWS

Golf Course, Creek

B4914

Disclaimer: 1. All dimensions are in metric, measured to wall finishes. 2. All materials, dimensions & drawings are approximate. 3. Information is subject to change without notice, at developer's absolute discretion. 4. Actual area may vary from the stated area. 5. Drawing are not to scale. 6. All images used are for illustrative purpose only and do not represent the actual size, features, specifications, fittings and furnishings. 7. The developer reserves the right to make revisions/ alterations, at its absolute discretion, without any liability whatsoever.

2 BEDROOM APARTMENT

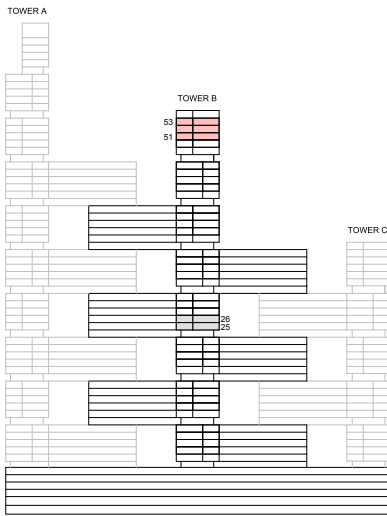
TYPE F (with maid room + balcony)

TOTAL SALEABLE AREA

SUITE = 1,027.31 SQ.FT.

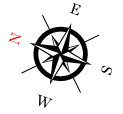
BALCONY = 48.64 SQ.FT.

TOTAL = 1,075.95 SQ.FT.



KEY ELEVATION

UNIT



List of unit numbers with this unit plan:

VIEWS

Golf Course, Creek
B5115, B5215, B5315

Disclaimer: 1. All dimensions are in metric, measured to wall finishes. 2. All materials, dimensions & drawings are approximate. 3. Information is subject to change without notice, at developer's absolute discretion. 4. Actual area may vary from the stated area. 5. Drawing are not to scale. 6. All images used are for illustrative purpose only and do not represent the actual size, features, specifications, fittings and furnishings. 7. The developer reserves the right to make revisions/ alterations, at its absolute discretion, without any liability whatsoever.

2 BEDROOM APARTMENT

TYPE F (with maid room + balcony)

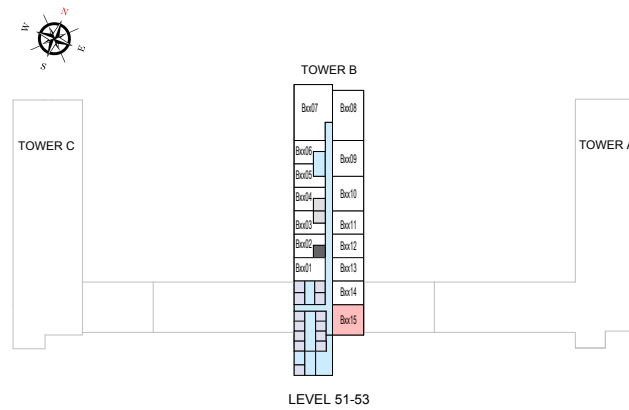
TOTAL SALEABLE AREA

SUITE = 1,027.31 SQ.FT.

BALCONY = 48.64 SQ.FT.

TOTAL = 1,075.95 SQ.FT.

 UNIT



List of unit numbers with this unit plan:

VIEWS

Golf Course, Creek
B5115, B5215, B5315

Disclaimer: 1. All dimensions are in metric, measured to wall finishes. 2. All materials, dimensions & drawings are approximate. 3. Information is subject to change without notice, at developer's absolute discretion. 4. Actual area may vary from the stated area. 5. Drawing are not to scale. 6. All images used are for illustrative purpose only and do not represent the actual size, features, specifications, fittings and furnishings. 7. The developer reserves the right to make revisions/ alterations, at its absolute discretion, without any liability whatsoever.

2 BEDROOM APARTMENT

TYPE H (with maid room + yard) VARIANT 1

TOTAL SALEABLE AREA

SUITE = 1,018.80 SQ.FT.

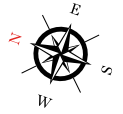
YARD = 271.57 SQ.FT.

TOTAL = 1,290.37 SQ.FT.



KEY ELEVATION

UNIT



List of unit numbers with this unit plan:

VIEWS

Golf Course, Creek
B4815

Disclaimer: 1. All dimensions are in metric, measured to wall finishes. 2. All materials, dimensions & drawings are approximate. 3. Information is subject to change without notice, at developer's absolute discretion. 4. Actual area may vary from the stated area. 5. Drawing are not to scale. 6. All images used are for illustrative purpose only and do not represent the actual size, features, specifications, fittings and furnishings. 7. The developer reserves the right to make revisions/ alterations, at its absolute discretion, without any liability whatsoever.

2 BEDROOM APARTMENT
TYPE H (with maid room + yard) VARIANT 1

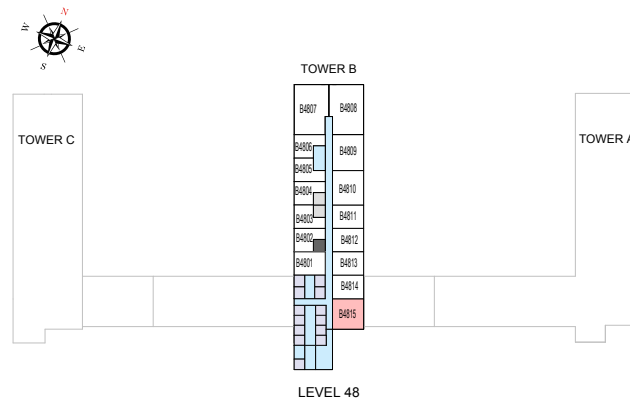
TOTAL SALEABLE AREA

SUITE = 1,018.80 SQ.FT.

YARD = 271.57 SQ.FT.

TOTAL = 1,290.37 SQ.FT.

 UNIT



List of unit numbers with this unit plan:

VIEWS

Golf Course, Creek
B4815

Disclaimer: 1. All dimensions are in metric, measured to wall finishes. 2. All materials, dimensions & drawings are approximate. 3. Information is subject to change without notice, at developer's absolute discretion. 4. Actual area may vary from the stated area. 5. Drawing are not to scale. 6. All images used are for illustrative purpose only and do not represent the actual size, features, specifications, fittings and furnishings. 7. The developer reserves the right to make revisions/ alterations, at its absolute discretion, without any liability whatsoever.

2 BEDROOM APARTMENT

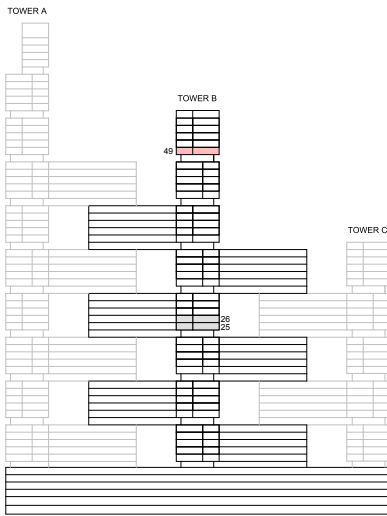
TYPE Q (with maid room + yard) VARIANT 4

TOTAL SALEABLE AREA

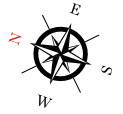
SUITE = 1,027.20 SQ.FT.

YARD = 262.96 SQ.FT.

TOTAL = 1,290.16 SQ.FT.



UNIT



List of unit numbers with this unit plan:

VIEWS

Golf Course, Creek
B4915

Disclaimer: 1. All dimensions are in metric, measured to wall finishes. 2. All materials, dimensions & drawings are approximate. 3. Information is subject to change without notice, at developer's absolute discretion. 4. Actual area may vary from the stated area. 5. Drawing are not to scale. 6. All images used are for illustrative purpose only and do not represent the actual size, features, specifications, fittings and furnishings. 7. The developer reserves the right to make revisions/ alterations, at its absolute discretion, without any liability whatsoever.

2 BEDROOM APARTMENT

TYPE Q (with maid room + yard) VARIANT 4

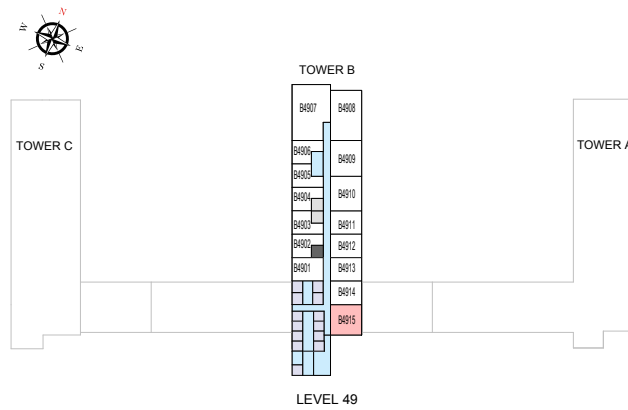
TOTAL SALEABLE AREA

SUITE = 1,027.20 SQ.FT.

YARD = 262.96 SQ.FT.

TOTAL = 1,290.16 SQ.FT.

 UNIT



List of unit numbers with this unit plan:

VIEWS

Golf Course, Creek

B4915

Disclaimer: 1. All dimensions are in metric, measured to wall finishes. 2. All materials, dimensions & drawings are approximate. 3. Information is subject to change without notice, at developer's absolute discretion. 4. Actual area may vary from the stated area. 5. Drawing are not to scale. 6. All images used are for illustrative purpose only and do not represent the actual size, features, specifications, fittings and furnishings. 7. The developer reserves the right to make revisions/ alterations, at its absolute discretion, without any liability whatsoever.

TOWER B

UNIT PLAN LAYOUTS
(LINK UNITS)

2 BEDROOM LINK APARTMENT

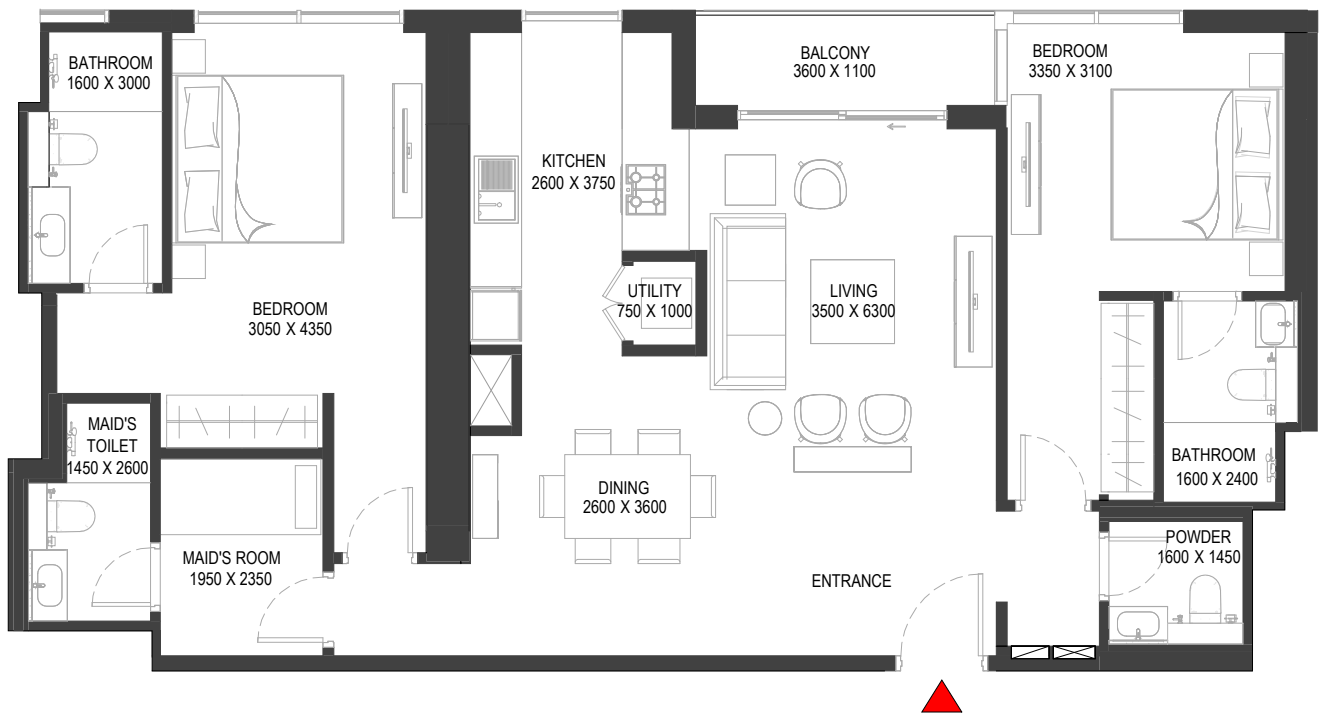
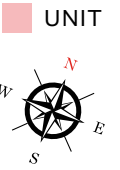
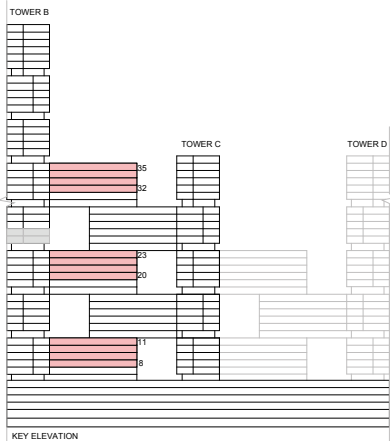
TYPE D (with maid room, powder room + yard) VARIANT 4

TOTAL SALEABLE AREA

SUITE = 1,205.77 SQ.FT.

YARD = 49.73 SQ.FT.

TOTAL = 1,255.50 SQ.FT.



List of unit numbers with this unit plan:

VIEWS

Ras Al Khor, Amenities

B821, B921

Ras Al Khor, Golf Course, Amenities

B1021, B1121, B2021, B2121, B2221, B2321

Ras Al Khor, Golf Course

B3221, B3321, B3421, B3521

Disclaimer: 1. All dimensions are in metric, measured to wall finishes. 2. All materials, dimensions & drawings are approximate. 3. Information is subject to change without notice, at developer's absolute discretion. 4. Actual area may vary from the stated area. 5. Drawing are not to scale. 6. All images used are for illustrative purpose only and do not represent the actual size, features, specifications, fittings and furnishings. 7. The developer reserves the right to make revisions/ alterations, at its absolute discretion, without any liability whatsoever.

2 BEDROOM LINK APARTMENT

TYPE D (with maid room, powder room + yard) VARIANT 4

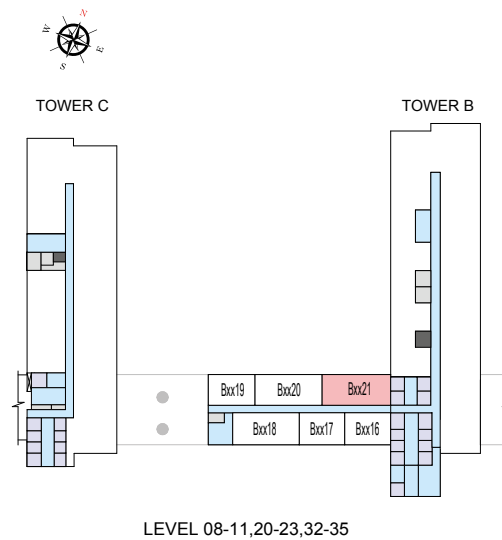
TOTAL SALEABLE AREA

SUITE = 1,205.77 SQ.FT.

YARD = 49.73 SQ.FT.

TOTAL = 1,255.50 SQ.FT.

 UNIT



LEVEL 08-11,20-23,32-35

List of unit numbers with this unit plan:

VIEWS

Ras Al Khor, Amenities
B821, B921

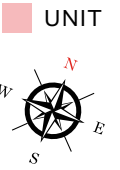
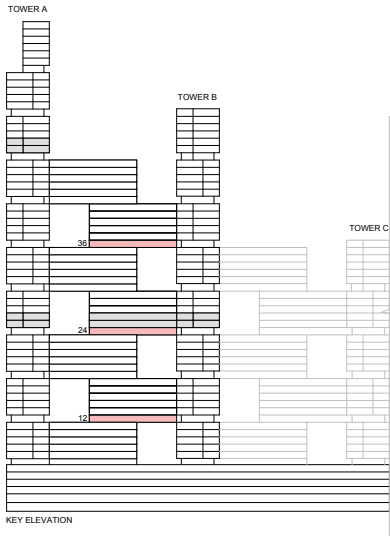
Ras Al Khor, Golf Course, Amenities
B1021, B1121, B2021, B2121, B2221, B2321

Ras Al Khor, Golf Course
B3221, B3321, B3421, B3521

Disclaimer: 1. All dimensions are in metric, measured to wall finishes. 2. All materials, dimensions & drawings are approximate. 3. Information is subject to change without notice, at developer's absolute discretion. 4. Actual area may vary from the stated area. 5. Drawing are not to scale. 6. All images used are for illustrative purpose only and do not represent the actual size, features, specifications, fittings and furnishings. 7. The developer reserves the right to make revisions/ alterations, at its absolute discretion, without any liability whatsoever.

2 BEDROOM LINK APARTMENT
TYPE G (with maid room, powder room + yard)

TOTAL SALEABLE AREA
 SUITE = 1,293.82 SQ.FT.
 YARD = 278.68 SQ.FT.
 TOTAL = 1,572.50 SQ.FT.



List of unit numbers with this unit plan:

VIEWS

Golf Course, Creek, Amenities
 B1221, B2421

Golf Course, Creek
 B3621

Disclaimer: 1. All dimensions are in metric, measured to wall finishes. 2. All materials, dimensions & drawings are approximate. 3. Information is subject to change without notice, at developer's absolute discretion. 4. Actual area may vary from the stated area. 5. Drawing are not to scale. 6. All images used are for illustrative purpose only and do not represent the actual size, features, specifications, fittings and furnishings. 7. The developer reserves the right to make revisions/ alterations, at its absolute discretion, without any liability whatsoever.

2 BEDROOM LINK APARTMENT

TYPE G (with maid room, powder room + yard)

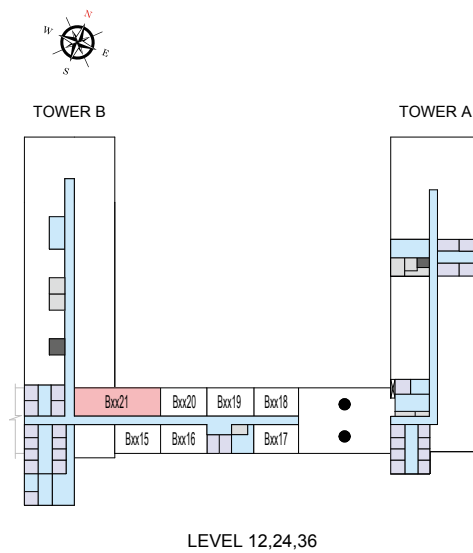
TOTAL SALEABLE AREA

SUITE = 1,293.82 SQ.FT.

YARD = 278.68 SQ.FT.

TOTAL = 1,572.50 SQ.FT.

 UNIT



List of unit numbers with this unit plan:

VIEWS

Golf Course, Creek, Amenities

B1221, B2421

Golf Course, Creek

B3621

Disclaimer: 1. All dimensions are in metric, measured to wall finishes. 2. All materials, dimensions & drawings are approximate. 3. Information is subject to change without notice, at developer's absolute discretion. 4. Actual area may vary from the stated area. 5. Drawing are not to scale. 6. All images used are for illustrative purpose only and do not represent the actual size, features, specifications, fittings and furnishings. 7. The developer reserves the right to make revisions/ alterations, at its absolute discretion, without any liability whatsoever.

2 BEDROOM LINK APARTMENT

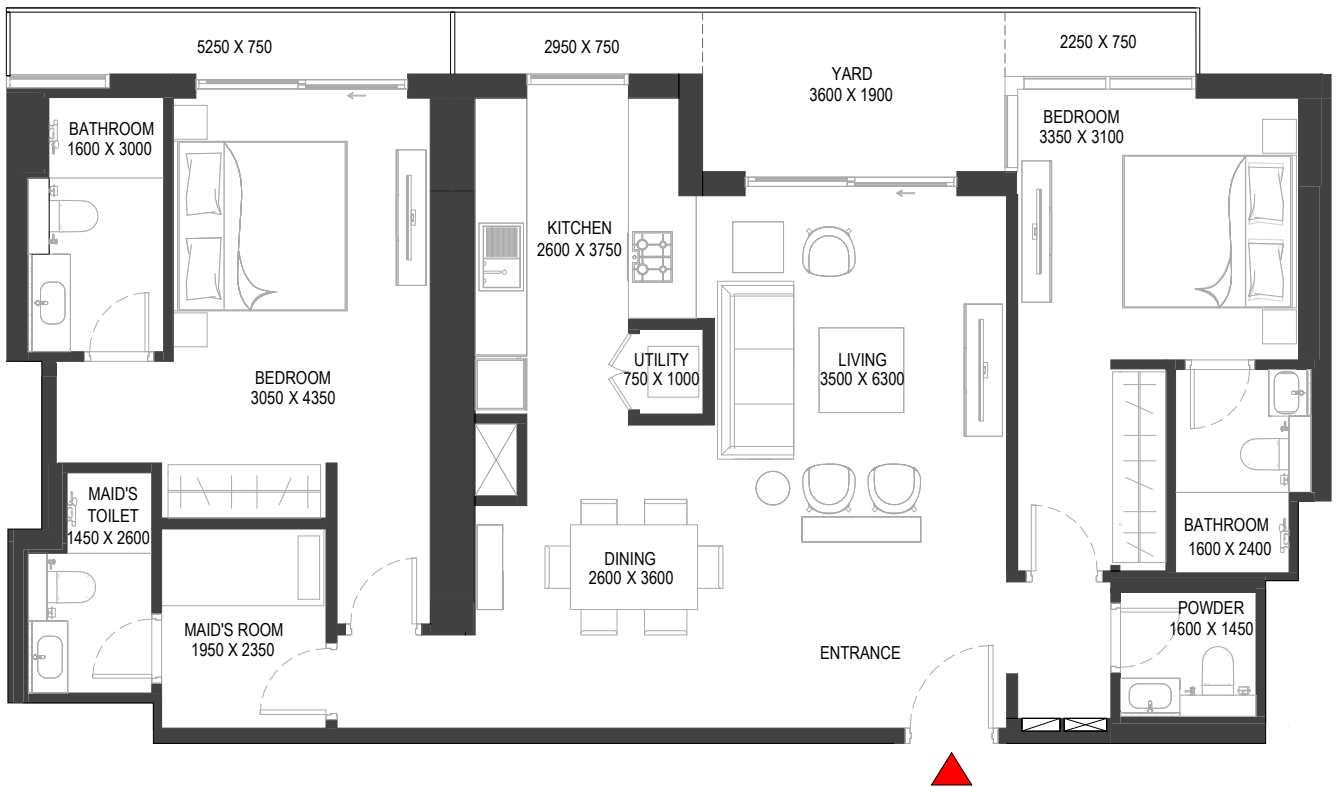
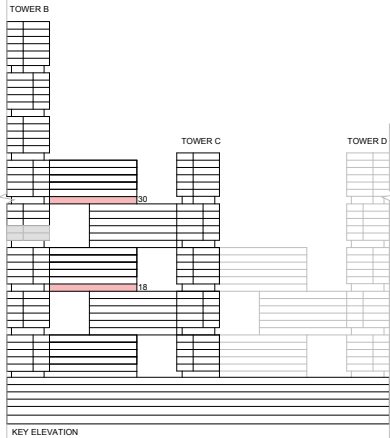
TYPE H (with maid room, powder room + yard) VARIANT 4

TOTAL SALEABLE AREA

SUITE = 1,205.77 SQ.FT.

YARD = 175.02 SQ.FT.

TOTAL = 1,380.79 SQ.FT.



List of unit numbers with this unit plan:

VIEWS

Ras Al Khor, Golf Course, Amenities

B1821

Ras Al Khor, Golf Course

B3021

Disclaimer: 1. All dimensions are in metric, measured to wall finishes. 2. All materials, dimensions & drawings are approximate. 3. Information is subject to change without notice, at developer's absolute discretion. 4. Actual area may vary from the stated area. 5. Drawing are not to scale. 6. All images used are for illustrative purpose only and do not represent the actual size, features, specifications, fittings and furnishings. 7. The developer reserves the right to make revisions/ alterations, at its absolute discretion, without any liability whatsoever.

2 BEDROOM LINK APARTMENT

TYPE H (with maid room, powder room + yard) VARIANT 4

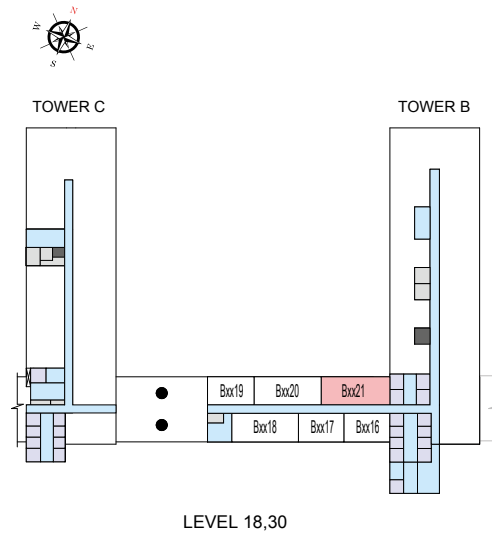
TOTAL SALEABLE AREA

SUITE = 1,205.77 SQ.FT.

YARD = 175.02 SQ.FT.

TOTAL = 1,380.79 SQ.FT.

 UNIT



List of unit numbers with this unit plan:

VIEWS

Ras Al Khor, Golf Course, Amenities

B1821

Ras Al Khor, Golf Course

B3021

Disclaimer: 1. All dimensions are in metric, measured to wall finishes. 2. All materials, dimensions & drawings are approximate. 3. Information is subject to change without notice, at developer's absolute discretion. 4. Actual area may vary from the stated area. 5. Drawing are not to scale. 6. All images used are for illustrative purpose only and do not represent the actual size, features, specifications, fittings and furnishings. 7. The developer reserves the right to make revisions/ alterations, at its absolute discretion, without any liability whatsoever.

2 BEDROOM LINK APARTMENT

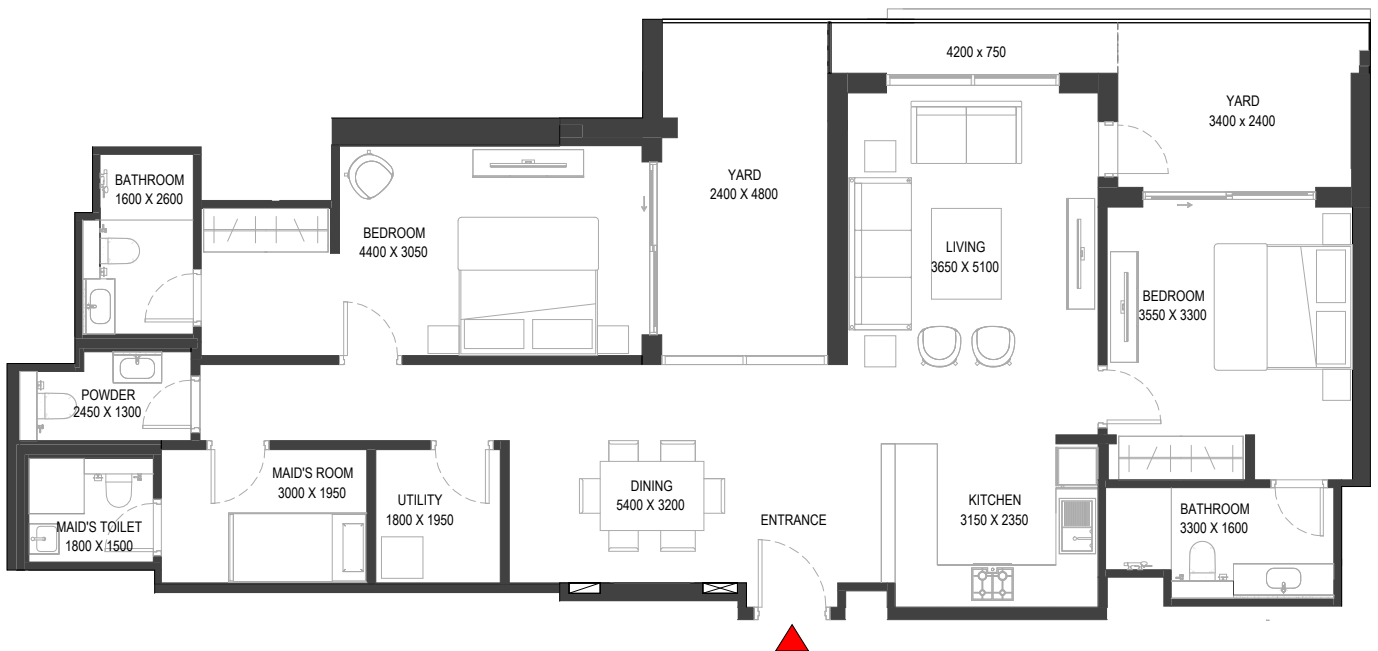
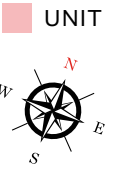
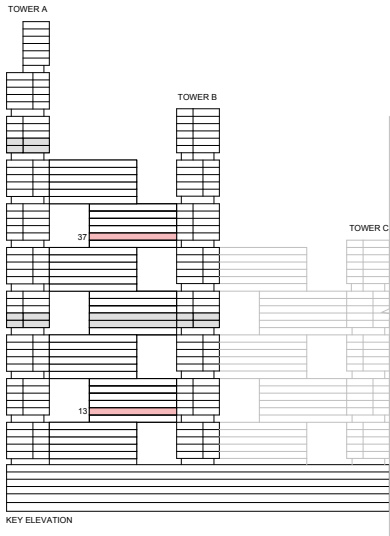
TYPE L (with maid room, powder room + yard)

TOTAL SALEABLE AREA

SUITE = 1,293.82 SQ.FT.

YARD = 278.68 SQ.FT.

TOTAL = 1,572.50 SQ.FT.



List of unit numbers with this unit plan:

VIEWS

Golf Course, Creek, Amenities

B1321

Golf Course, Creek

B3721

Disclaimer: 1. All dimensions are in metric, measured to wall finishes. 2. All materials, dimensions & drawings are approximate. 3. Information is subject to change without notice, at developer's absolute discretion. 4. Actual area may vary from the stated area. 5. Drawing are not to scale. 6. All images used are for illustrative purpose only and do not represent the actual size, features, specifications, fittings and furnishings. 7. The developer reserves the right to make revisions/ alterations, at its absolute discretion, without any liability whatsoever.

2 BEDROOM LINK APARTMENT

TYPE L (with maid room, powder room + yard)

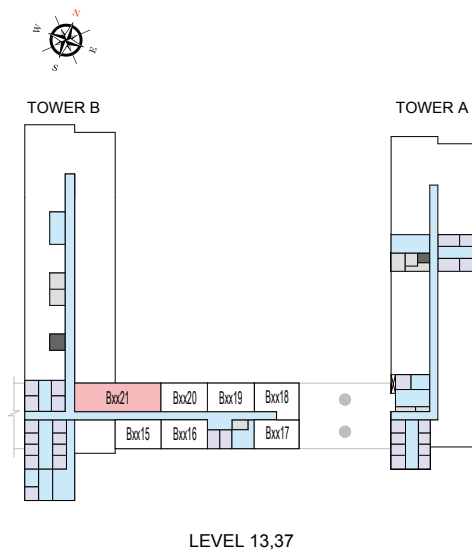
TOTAL SALEABLE AREA

SUITE = 1,293.82 SQ.FT.

YARD = 278.68 SQ.FT.

TOTAL = 1,572.50 SQ.FT.

 UNIT



LEVEL 13,37

List of unit numbers with this unit plan:

VIEWS

Golf Course, Creek, Amenities

B1321

Golf Course, Creek

B3721

Disclaimer: 1. All dimensions are in metric, measured to wall finishes. 2. All materials, dimensions & drawings are approximate. 3. Information is subject to change without notice, at developer's absolute discretion. 4. Actual area may vary from the stated area. 5. Drawing are not to scale. 6. All images used are for illustrative purpose only and do not represent the actual size, features, specifications, fittings and furnishings. 7. The developer reserves the right to make revisions/ alterations, at its absolute discretion, without any liability whatsoever.

2 BEDROOM LINK APARTMENT

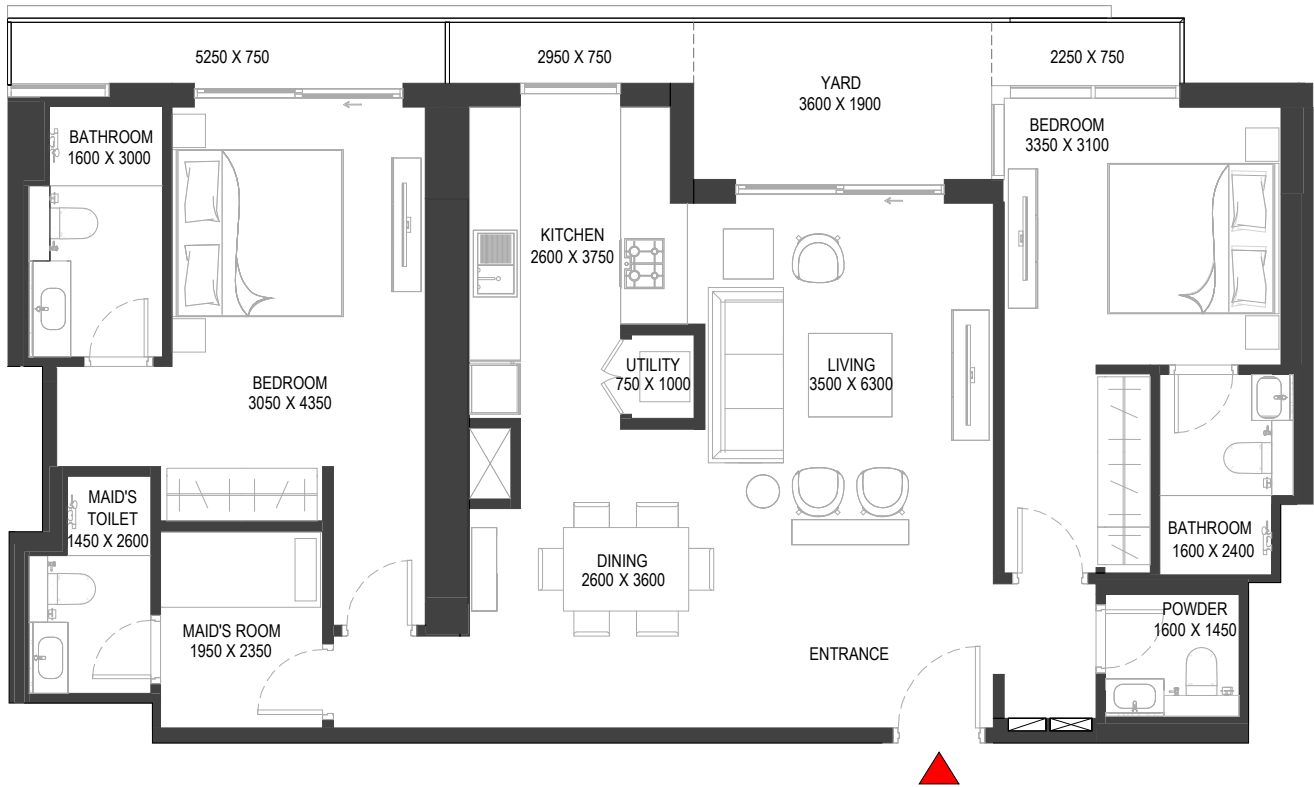
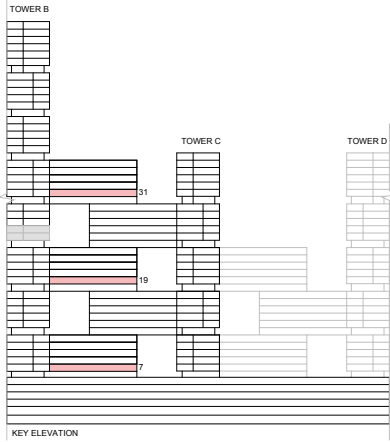
TYPE M (with maid room, powder room + yard) VARIANT 4

TOTAL SALEABLE AREA

SUITE = 1,205.77 SQ.FT.

YARD = 175.02 SQ.FT.

TOTAL = 1,380.79 SQ.FT.



List of unit numbers with this unit plan:

VIEWS

Ras Al Khor, Amenities

B721

Ras Al Khor, Golf Course, Amenities

B1921

Ras Al Khor, Golf Course

B3121

Disclaimer: 1. All dimensions are in metric, measured to wall finishes. 2. All materials, dimensions & drawings are approximate. 3. Information is subject to change without notice, at developer's absolute discretion. 4. Actual area may vary from the stated area. 5. Drawing are not to scale. 6. All images used are for illustrative purpose only and do not represent the actual size, features, specifications, fittings and furnishings. 7. The developer reserves the right to make revisions/ alterations, at its absolute discretion, without any liability whatsoever.

2 BEDROOM LINK APARTMENT

TYPE M (with maid room, powder room + yard) VARIANT 4

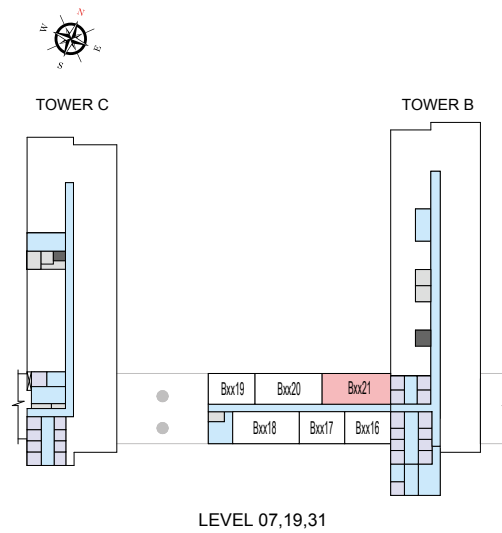
TOTAL SALEABLE AREA

SUITE = 1,205.77 SQ.FT.

YARD = 175.02 SQ.FT.

TOTAL = 1,380.79 SQ.FT.

 UNIT



List of unit numbers with this unit plan:

VIEWS

Ras Al Khor, Amenities
B721

Ras Al Khor, Golf Course, Amenities
B1921

Ras Al Khor, Golf Course
B3121

Disclaimer: 1. All dimensions are in metric, measured to wall finishes. 2. All materials, dimensions & drawings are approximate. 3. Information is subject to change without notice, at developer's absolute discretion. 4. Actual area may vary from the stated area. 5. Drawing are not to scale. 6. All images used are for illustrative purpose only and do not represent the actual size, features, specifications, fittings and furnishings. 7. The developer reserves the right to make revisions/ alterations, at its absolute discretion, without any liability whatsoever.

TOWER C

UNIT PLAN LAYOUTS

1 BEDROOM APARTMENT

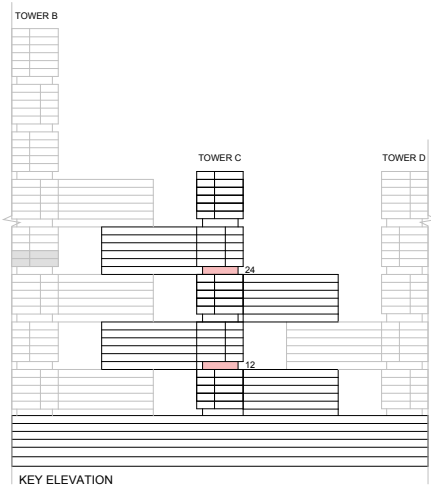
TYPE B (with powder room + balcony) VARIANT 6

TOTAL SALEABLE AREA

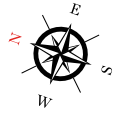
SUITE = 726.13 SQ.FT.

BALCONY = 42.95 SQ.FT.

TOTAL = 769.08 SQ.FT.



UNIT



List of unit numbers with this unit plan:

VIEWS

Golf Course, Creek, Amenities
C1208, C2408

Disclaimer: 1. All dimensions are in metric, measured to wall finishes. 2. All materials, dimensions & drawings are approximate. 3. Information is subject to change without notice, at developer's absolute discretion. 4. Actual area may vary from the stated area. 5. Drawing are not to scale. 6. All images used are for illustrative purpose only and do not represent the actual size, features, specifications, fittings and furnishings. 7. The developer reserves the right to make revisions/ alterations, at its absolute discretion, without any liability whatsoever.

1 BEDROOM APARTMENT

TYPE B (with powder room + balcony) VARIANT 6

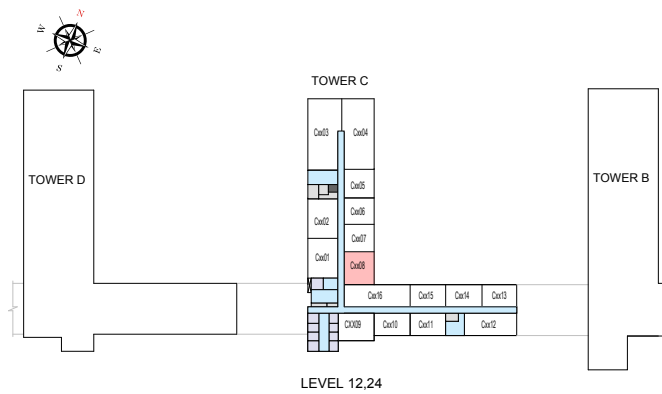
TOTAL SALEABLE AREA

SUITE = 726.13 SQ.FT.

BALCONY = 42.95 SQ.FT.

TOTAL = 769.08 SQ.FT.

UNIT



List of unit numbers with this unit plan:

VIEWS

Golf Course, Creek, Amenities
C1208, C2408

Disclaimer: 1. All dimensions are in metric, measured to wall finishes. 2. All materials, dimensions & drawings are approximate. 3. Information is subject to change without notice, at developer's absolute discretion. 4. Actual area may vary from the stated area. 5. Drawing are not to scale. 6. All images used are for illustrative purpose only and do not represent the actual size, features, specifications, fittings and furnishings. 7. The developer reserves the right to make revisions/ alterations, at its absolute discretion, without any liability whatsoever.

1 BEDROOM APARTMENT

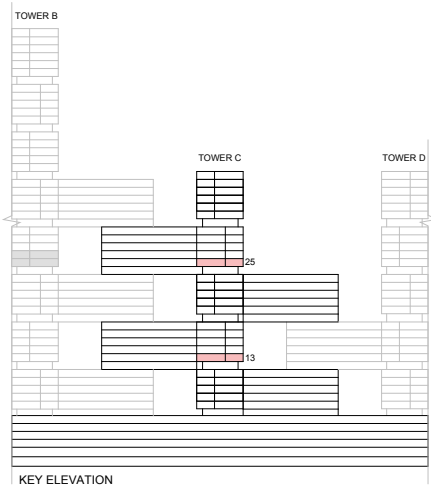
TYPE C (with powder room + balcony) VARIANT 6

TOTAL SALEABLE AREA

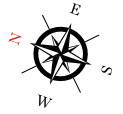
SUITE = 674.79 SQ.FT.

BALCONY = 133.04 SQ.FT.

TOTAL = 807.83 SQ.FT.



UNIT



List of unit numbers with this unit plan:

VIEWS

Golf Course, Creek, Amenities

C1308

Golf Course, Creek

C2508



Disclaimer: 1. All dimensions are in metric, measured to wall finishes. 2. All materials, dimensions & drawings are approximate. 3. Information is subject to change without notice, at developer's absolute discretion. 4. Actual area may vary from the stated area. 5. Drawing are not to scale. 6. All images used are for illustrative purpose only and do not represent the actual size, features, specifications, fittings and furnishings. 7. The developer reserves the right to make revisions/ alterations, at its absolute discretion, without any liability whatsoever.

1 BEDROOM APARTMENT

TYPE C (with powder room + balcony) VARIANT 6

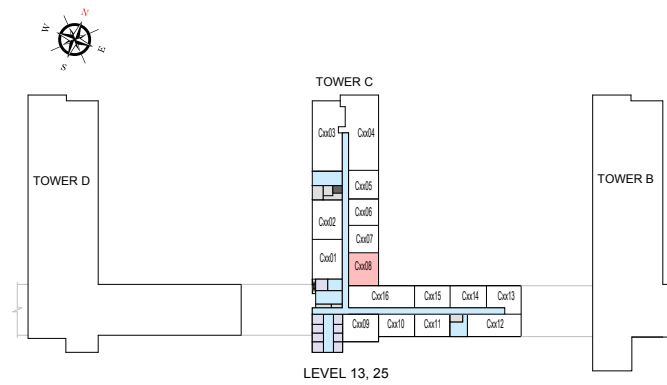
TOTAL SALEABLE AREA

SUITE = 674.79 SQ.FT.

BALCONY = 133.04 SQ.FT.

TOTAL = 807.83 SQ.FT.

 UNIT



List of unit numbers with this unit plan:

VIEWS

Golf Course, Creek, Amenities

C1308

Golf Course, Creek

C2508

Disclaimer: 1. All dimensions are in metric, measured to wall finishes. 2. All materials, dimensions & drawings are approximate. 3. Information is subject to change without notice, at developer's absolute discretion. 4. Actual area may vary from the stated area. 5. Drawing are not to scale. 6. All images used are for illustrative purpose only and do not represent the actual size, features, specifications, fittings and furnishings. 7. The developer reserves the right to make revisions/ alterations, at its absolute discretion, without any liability whatsoever.

TOWER C

UNIT PLAN LAYOUTS
(LINK UNITS)

2 BEDROOM LINK APARTMENT

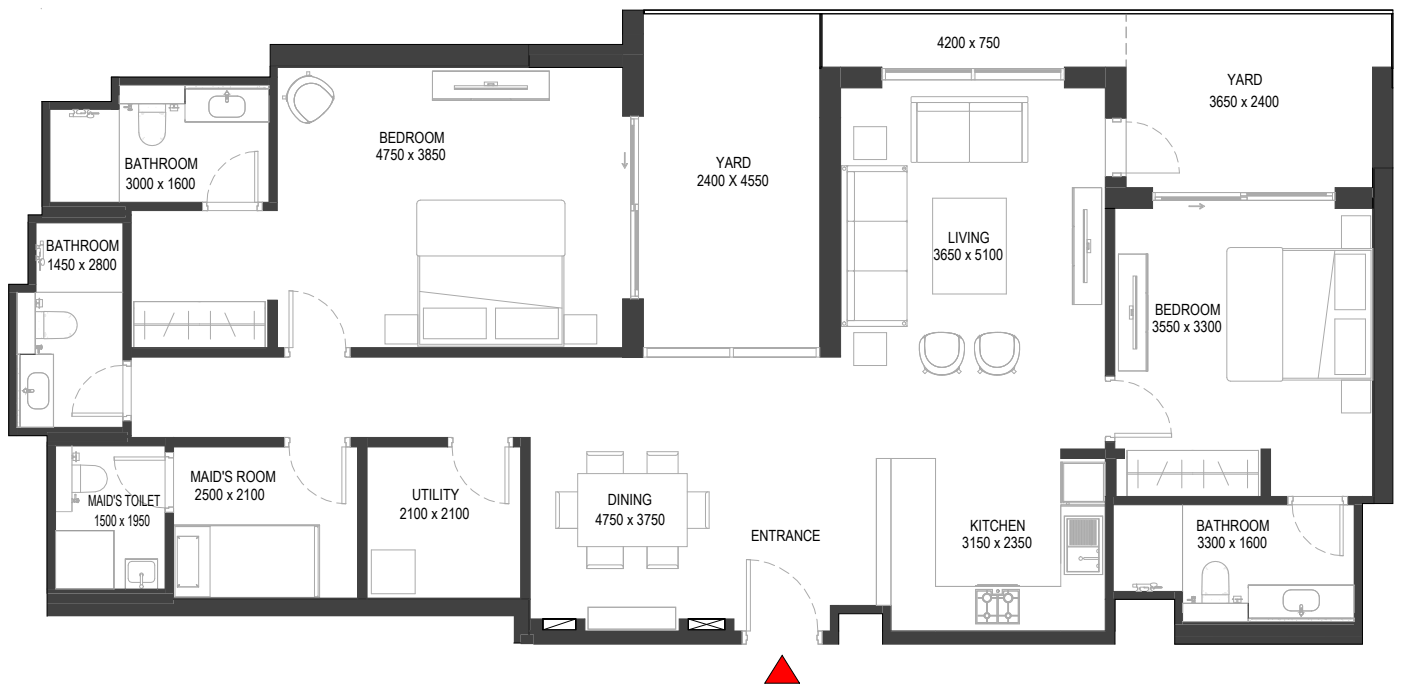
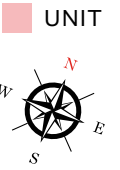
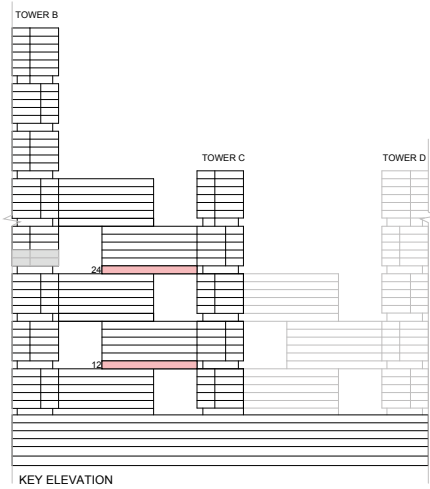
TYPE G (with maid room, powder room + yard) VARIANT 1

TOTAL SALEABLE AREA

SUITE = 1,382.09 SQ.FT.

YARD = 272.87 SQ.FT.

TOTAL = 1,654.96 SQ.FT.



List of unit numbers with this unit plan:

VIEWS

Golf Course, Creek, Amenities
C1216, C2416

Disclaimer: 1. All dimensions are in metric, measured to wall finishes. 2. All materials, dimensions & drawings are approximate. 3. Information is subject to change without notice, at developer's absolute discretion. 4. Actual area may vary from the stated area. 5. Drawing are not to scale. 6. All images used are for illustrative purpose only and do not represent the actual size, features, specifications, fittings and furnishings. 7. The developer reserves the right to make revisions/ alterations, at its absolute discretion, without any liability whatsoever.

2 BEDROOM LINK APARTMENT

TYPE G (with maid room, powder room + yard) VARIANT 1

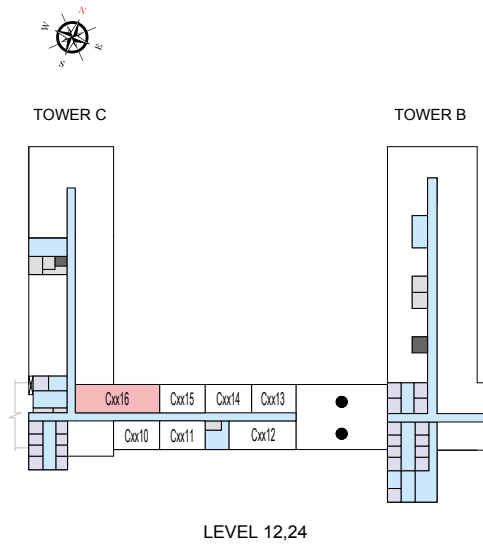
TOTAL SALEABLE AREA

SUITE = 1,382.09 SQ.FT.

YARD = 272.87 SQ.FT.

TOTAL = 1,654.96 SQ.FT.

UNIT



List of unit numbers with this unit plan:

VIEWS

Golf Course, Creek, Amenities
C1216, C2416

Disclaimer: 1. All dimensions are in metric, measured to wall finishes. 2. All materials, dimensions & drawings are approximate. 3. Information is subject to change without notice, at developer's absolute discretion. 4. Actual area may vary from the stated area. 5. Drawing are not to scale. 6. All images used are for illustrative purpose only and do not represent the actual size, features, specifications, fittings and furnishings. 7. The developer reserves the right to make revisions/ alterations, at its absolute discretion, without any liability whatsoever.

2 BEDROOM LINK APARTMENT

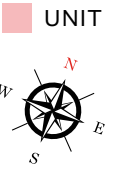
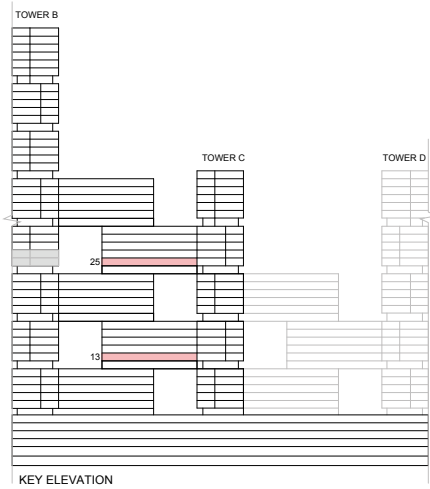
TYPE L (with maid room, powder room + yard) VARIANT 1

TOTAL SALEABLE AREA

SUITE = 1,382.09 SQ.FT.

YARD = 272.87 SQ.FT.

TOTAL = 1,654.96 SQ.FT.



List of unit numbers with this unit plan:

VIEWS

Golf Course, Creek, Amenities

C1316

Golf Course, Creek

C2516

Disclaimer: 1. All dimensions are in metric, measured to wall finishes. 2. All materials, dimensions & drawings are approximate. 3. Information is subject to change without notice, at developer's absolute discretion. 4. Actual area may vary from the stated area. 5. Drawing are not to scale. 6. All images used are for illustrative purpose only and do not represent the actual size, features, specifications, fittings and furnishings. 7. The developer reserves the right to make revisions/ alterations, at its absolute discretion, without any liability whatsoever.

2 BEDROOM LINK APARTMENT

TYPE L (with maid room, powder room + yard) VARIANT 1

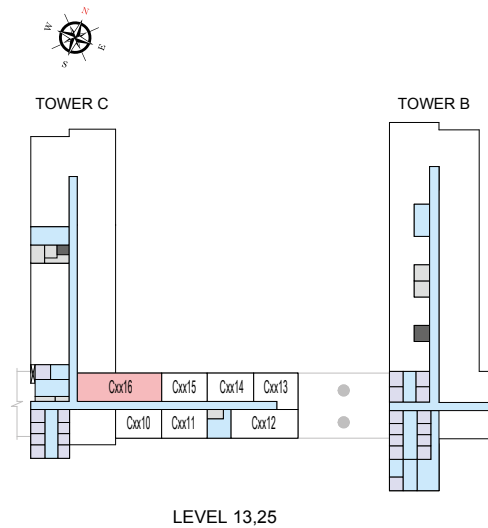
TOTAL SALEABLE AREA

SUITE = 1,382.09 SQ.FT.

YARD = 272.87 SQ.FT.

TOTAL = 1,654.96 SQ.FT.

 UNIT



List of unit numbers with this unit plan:

VIEWS

Golf Course, Creek, Amenities

C1316

Golf Course, Creek

C2516

Disclaimer: 1. All dimensions are in metric, measured to wall finishes. 2. All materials, dimensions & drawings are approximate. 3. Information is subject to change without notice, at developer's absolute discretion. 4. Actual area may vary from the stated area. 5. Drawing are not to scale. 6. All images used are for illustrative purpose only and do not represent the actual size, features, specifications, fittings and furnishings. 7. The developer reserves the right to make revisions/ alterations, at its absolute discretion, without any liability whatsoever.

TOWER D

UNIT PLAN LAYOUTS

1.5 BEDROOM APARTMENT

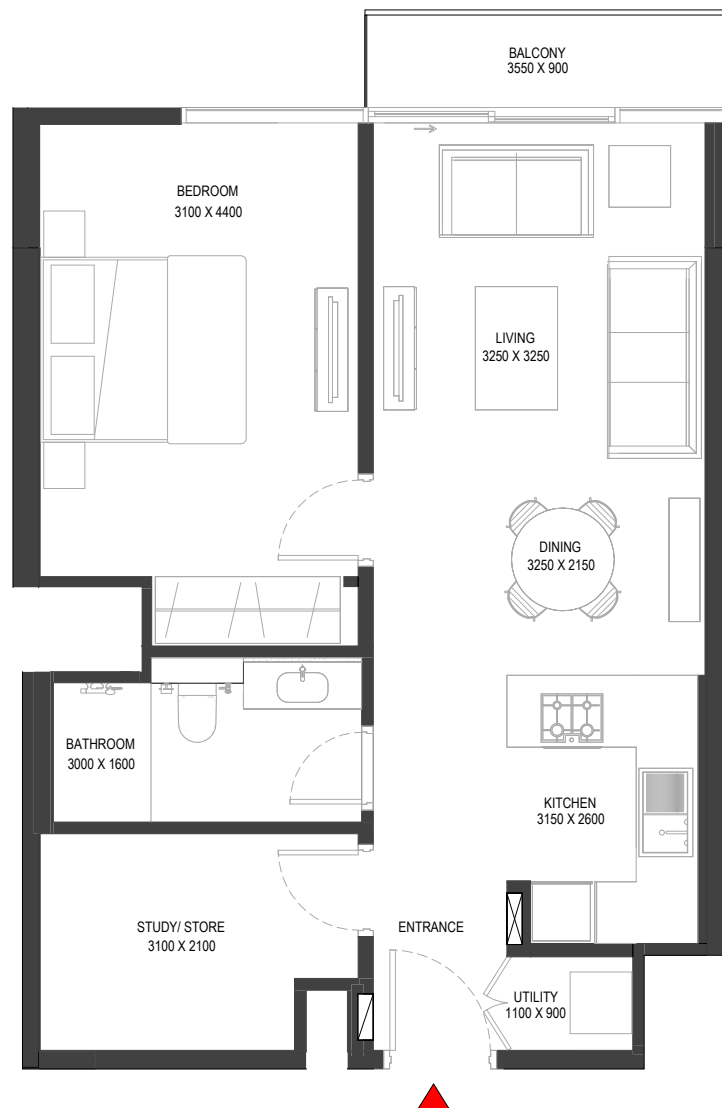
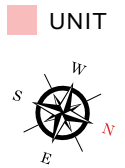
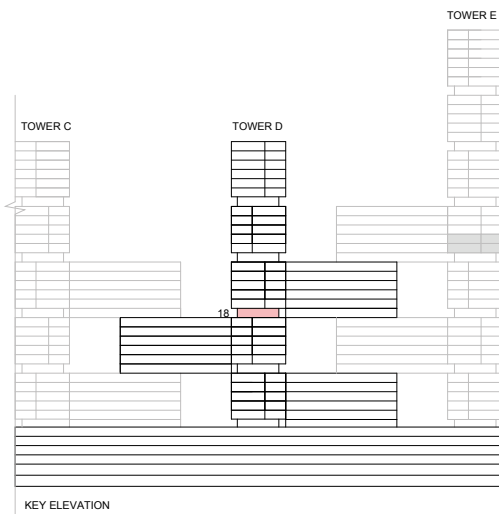
TYPE C (with study room + balcony) VARIANT 7

TOTAL SALEABLE AREA

SUITE = 671.13 SQ.FT.

BALCONY = 36.92 SQ.FT.

TOTAL = 708.05 SQ.FT.



List of unit numbers with this unit plan:

VIEWS

Ras Al Khor, Amenities
D1813

Disclaimer: 1. All dimensions are in metric, measured to wall finishes. 2. All materials, dimensions & drawings are approximate. 3. Information is subject to change without notice, at developer's absolute discretion. 4. Actual area may vary from the stated area. 5. Drawing are not to scale. 6. All images used are for illustrative purpose only and do not represent the actual size, features, specifications, fittings and furnishings. 7. The developer reserves the right to make revisions/ alterations, at its absolute discretion, without any liability whatsoever.

1.5 BEDROOM APARTMENT

TYPE C (with study room + balcony) VARIANT 7

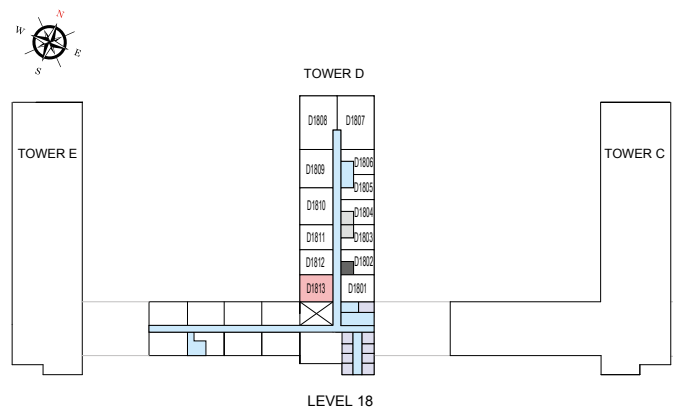
TOTAL SALEABLE AREA

SUITE = 671.13 SQ.FT.

BALCONY = 36.92 SQ.FT.

TOTAL = 708.05 SQ.FT.

 UNIT



List of unit numbers with this unit plan:

VIEWS

Ras Al Khor, Amenities

D1813

Disclaimer: 1. All dimensions are in metric, measured to wall finishes. 2. All materials, dimensions & drawings are approximate. 3. Information is subject to change without notice, at developer's absolute discretion. 4. Actual area may vary from the stated area. 5. Drawing are not to scale. 6. All images used are for illustrative purpose only and do not represent the actual size, features, specifications, fittings and furnishings. 7. The developer reserves the right to make revisions/ alterations, at its absolute discretion, without any liability whatsoever.

1.5 BEDROOM APARTMENT

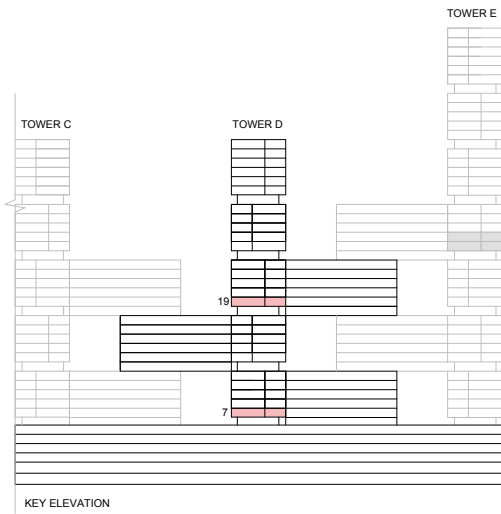
TYPE E (with study room + balcony) VARIANT 7

TOTAL SALEABLE AREA

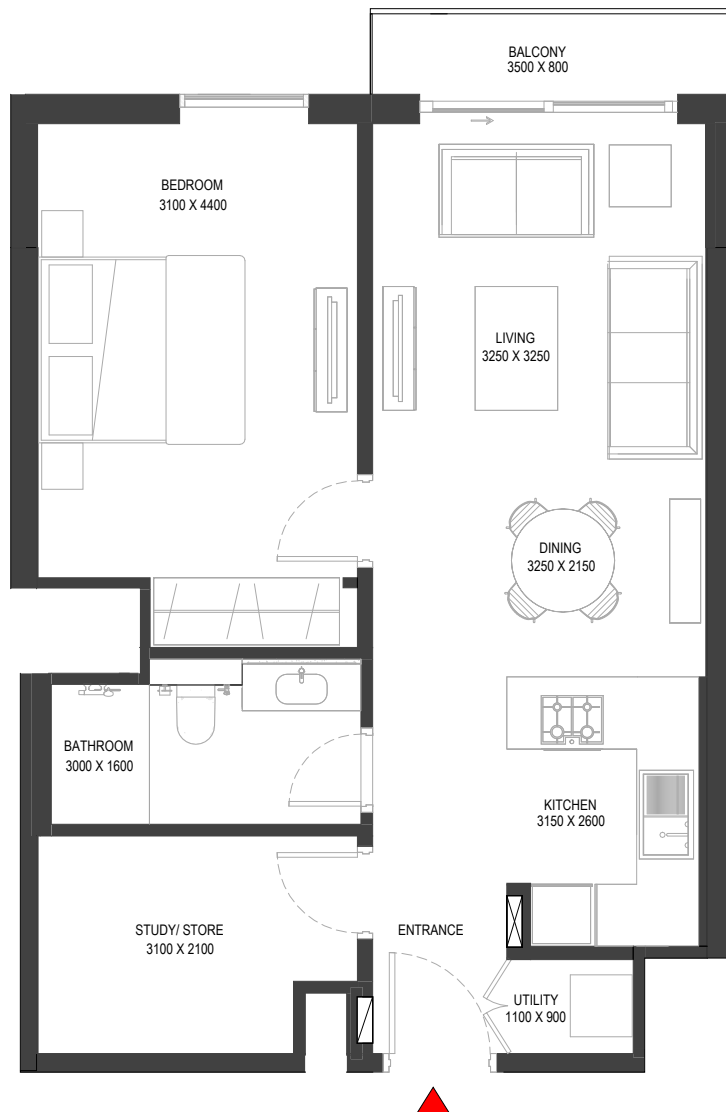
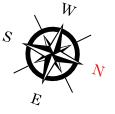
SUITE = 672.42 SQ.FT.

BALCONY = 36.38 SQ.FT.

TOTAL = 708.80 SQ.FT.



■ UNIT



List of unit numbers with this unit plan:

VIEWS

Ras Al Khor, Amenities
D713, D1913

Disclaimer: 1. All dimensions are in metric, measured to wall finishes. 2. All materials, dimensions & drawings are approximate. 3. Information is subject to change without notice, at developer's absolute discretion. 4. Actual area may vary from the stated area. 5. Drawing are not to scale. 6. All images used are for illustrative purpose only and do not represent the actual size, features, specifications, fittings and furnishings. 7. The developer reserves the right to make revisions/ alterations, at its absolute discretion, without any liability whatsoever.

1.5 BEDROOM APARTMENT

TYPE E (with study room + balcony) VARIANT 7

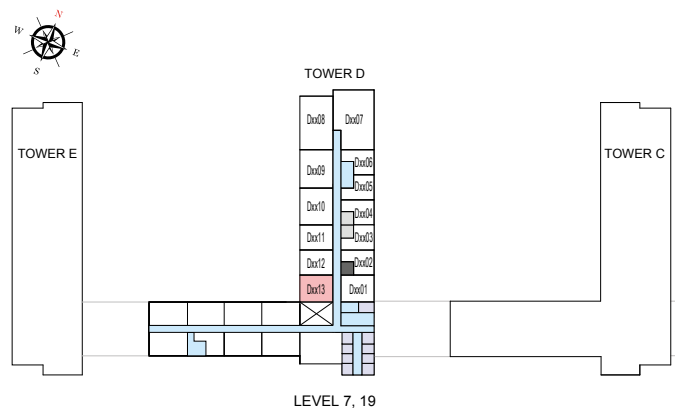
TOTAL SALEABLE AREA

SUITE = 672.42 SQ.FT.

BALCONY = 36.38 SQ.FT.

TOTAL = 708.80 SQ.FT.

 UNIT



List of unit numbers with this unit plan:

VIEWS

Ras Al Khor, Amenities

D713, D1913

Disclaimer: 1. All dimensions are in metric, measured to wall finishes. 2. All materials, dimensions & drawings are approximate. 3. Information is subject to change without notice, at developer's absolute discretion. 4. Actual area may vary from the stated area. 5. Drawing are not to scale. 6. All images used are for illustrative purpose only and do not represent the actual size, features, specifications, fittings and furnishings. 7. The developer reserves the right to make revisions/ alterations, at its absolute discretion, without any liability whatsoever.

TOWER D

UNIT PLAN LAYOUTS
(LINK UNITS)

2 BEDROOM LINK APARTMENT

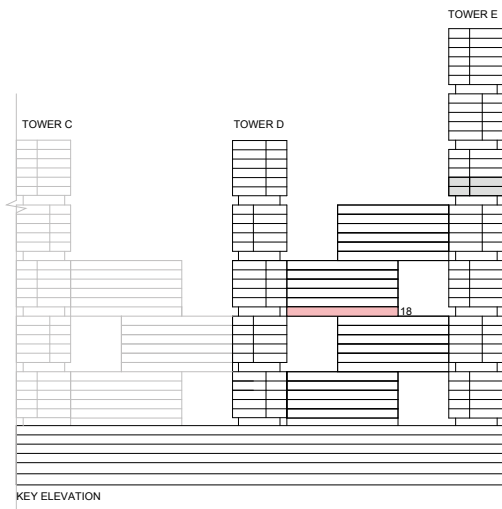
TYPE G (with maid room, powder room + yard) VARIANT 2

TOTAL SALEABLE AREA

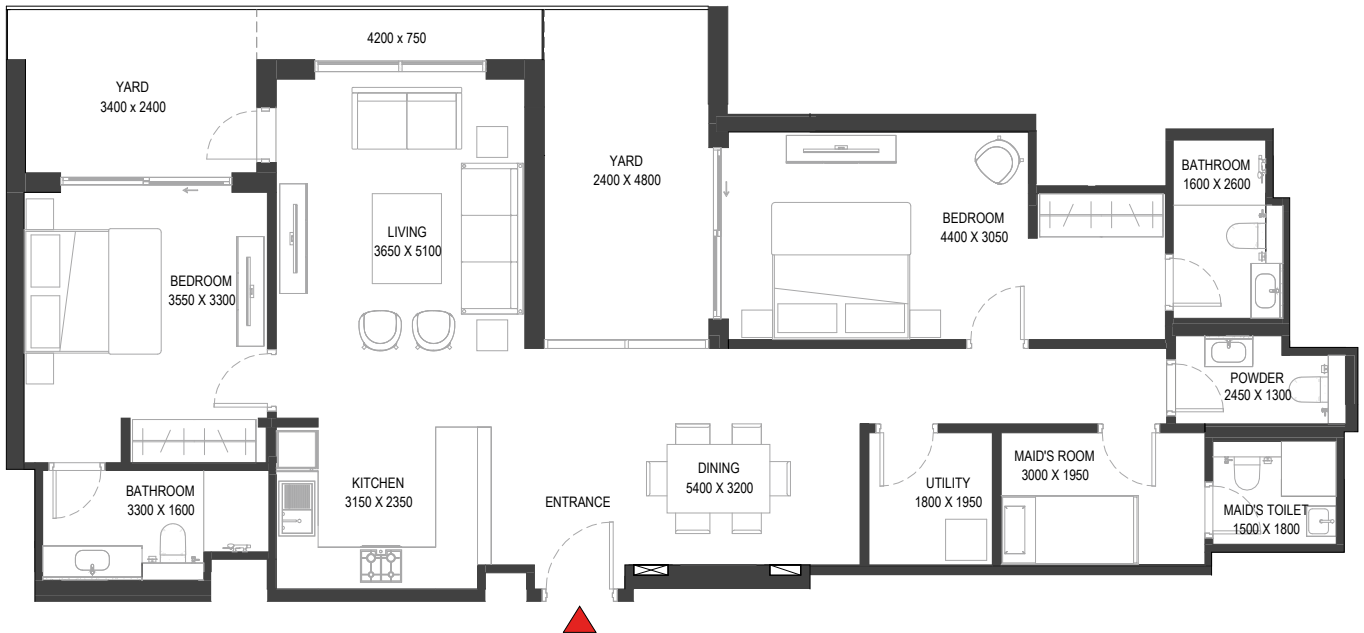
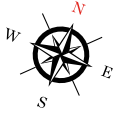
SUITE = 1,293.82 SQ.FT.

YARD = 278.68 SQ.FT.

TOTAL = 1,572.50 SQ.FT.



UNIT



List of unit numbers with this unit plan:

VIEWS

Ras Al Khor, Golf Course, Amenities
D1821

Disclaimer: 1. All dimensions are in metric, measured to wall finishes. 2. All materials, dimensions & drawings are approximate. 3. Information is subject to change without notice, at developer's absolute discretion. 4. Actual area may vary from the stated area. 5. Drawing are not to scale. 6. All images used are for illustrative purpose only and do not represent the actual size, features, specifications, fittings and furnishings. 7. The developer reserves the right to make revisions/ alterations, at its absolute discretion, without any liability whatsoever.

2 BEDROOM LINK APARTMENT

TYPE G (with maid room, powder room + yard) VARIANT 2

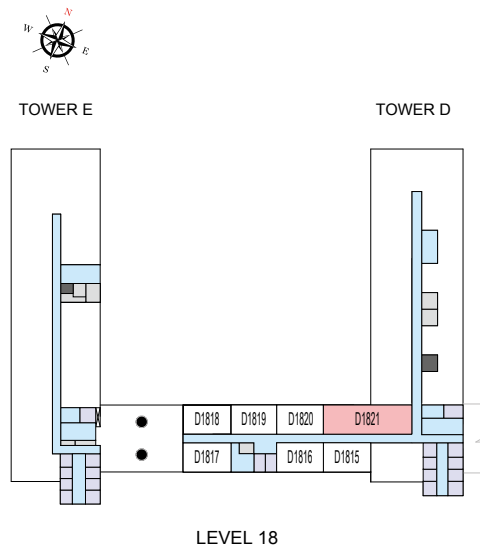
TOTAL SALEABLE AREA

SUITE = 1,293.82 SQ.FT.

YARD = 278.68 SQ.FT.

TOTAL = 1,572.50 SQ.FT.

 UNIT



List of unit numbers with this unit plan:

VIEWS

Ras Al Khor, Golf Course, Amenities

D1821

Disclaimer: 1. All dimensions are in metric, measured to wall finishes. 2. All materials, dimensions & drawings are approximate. 3. Information is subject to change without notice, at developer's absolute discretion. 4. Actual area may vary from the stated area. 5. Drawing are not to scale. 6. All images used are for illustrative purpose only and do not represent the actual size, features, specifications, fittings and furnishings. 7. The developer reserves the right to make revisions/ alterations, at its absolute discretion, without any liability whatsoever.

2 BEDROOM LINK APARTMENT

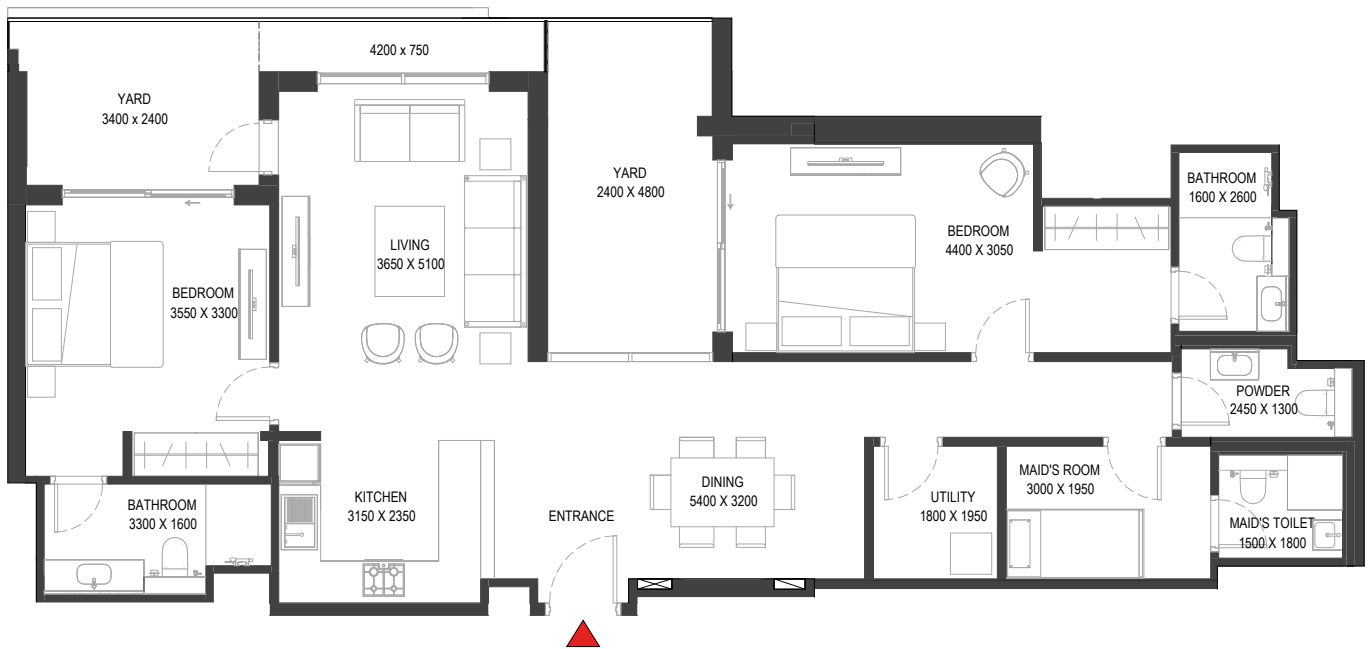
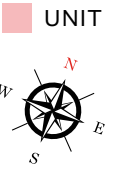
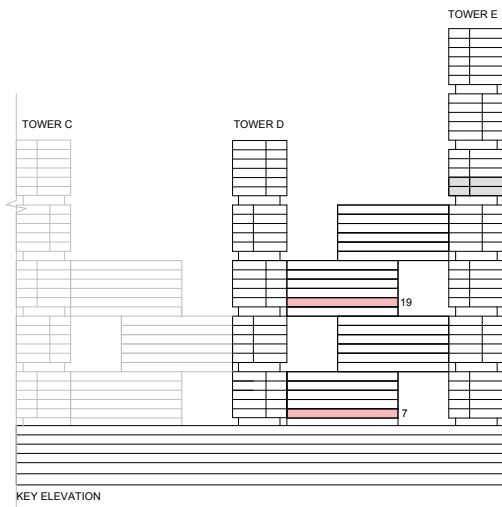
TYPE L (with maid room, powder room + yard) VARIANT 2

TOTAL SALEABLE AREA

SUITE = 1,293.82 SQ.FT.

YARD = 278.68 SQ.FT.

TOTAL = 1,572.50 SQ.FT.



List of unit numbers with this unit plan:

VIEWS

Ras Al Khor, Amenities

D721

Ras Al Khor, Golf Course, Amenities

D1921

Disclaimer: 1. All dimensions are in metric, measured to wall finishes. 2. All materials, dimensions & drawings are approximate. 3. Information is subject to change without notice, at developer's absolute discretion. 4. Actual area may vary from the stated area. 5. Drawing are not to scale. 6. All images used are for illustrative purpose only and do not represent the actual size, features, specifications, fittings and furnishings. 7. The developer reserves the right to make revisions/ alterations, at its absolute discretion, without any liability whatsoever.

2 BEDROOM LINK APARTMENT

TYPE L (with maid room, powder room + yard) VARIANT 2

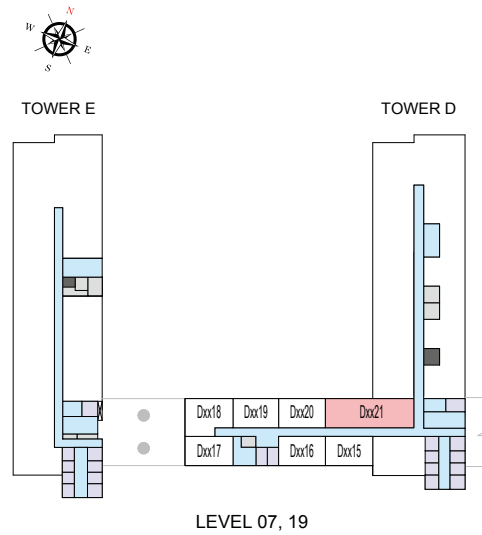
TOTAL SALEABLE AREA

SUITE = 1,293.82 SQ.FT.

YARD = 278.68 SQ.FT.

TOTAL = 1,572.50 SQ.FT.

 UNIT



List of unit numbers with this unit plan:

VIEWS

Ras Al Khor, Amenities

D721

Ras Al Khor, Golf Course, Amenities

D1921

Disclaimer: 1. All dimensions are in metric, measured to wall finishes. 2. All materials, dimensions & drawings are approximate. 3. Information is subject to change without notice, at developer's absolute discretion. 4. Actual area may vary from the stated area. 5. Drawing are not to scale. 6. All images used are for illustrative purpose only and do not represent the actual size, features, specifications, fittings and furnishings. 7. The developer reserves the right to make revisions/ alterations, at its absolute discretion, without any liability whatsoever.

TOWER E

UNIT PLAN LAYOUTS

2 BEDROOM APARTMENT

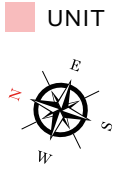
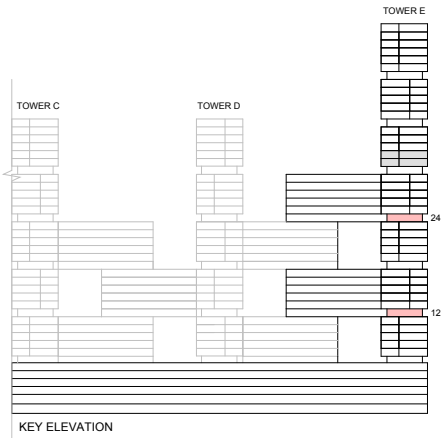
TYPE G (with powder room + yard) VARIANT 2

TOTAL SALEABLE AREA

SUITE = 1,026.77 SQ.FT.

YARD = 186.86 SQ.FT.

TOTAL = 1,213.63 SQ.FT.



List of unit numbers with this unit plan:

VIEWS

Golf Course, Creek, Amenities
E1210, E2410

Disclaimer: 1. All dimensions are in metric, measured to wall finishes. 2. All materials, dimensions & drawings are approximate. 3. Information is subject to change without notice, at developer's absolute discretion. 4. Actual area may vary from the stated area. 5. Drawing are not to scale. 6. All images used are for illustrative purpose only and do not represent the actual size, features, specifications, fittings and furnishings. 7. The developer reserves the right to make revisions/ alterations, at its absolute discretion, without any liability whatsoever.

2 BEDROOM APARTMENT

TYPE G (with powder room + yard) VARIANT 2

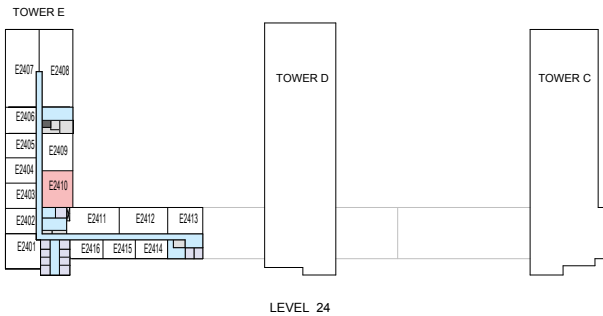
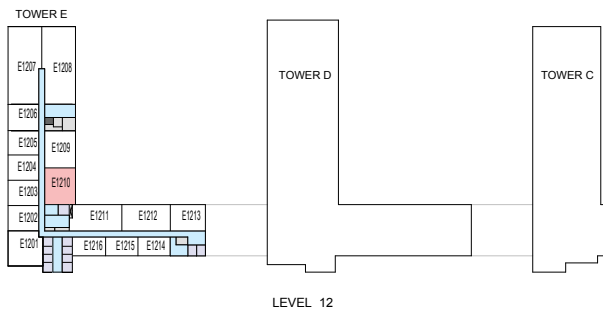
TOTAL SALEABLE AREA

SUITE = 1,026.77 SQ.FT.

YARD = 186.86 SQ.FT.

TOTAL = 1,213.63 SQ.FT.

 UNIT



List of unit numbers with this unit plan:

VIEWS

Golf Course, Creek, Amenities

E1210, E2410

Disclaimer: 1. All dimensions are in metric, measured to wall finishes. 2. All materials, dimensions & drawings are approximate. 3. Information is subject to change without notice, at developer's absolute discretion. 4. Actual area may vary from the stated area. 5. Drawing are not to scale. 6. All images used are for illustrative purpose only and do not represent the actual size, features, specifications, fittings and furnishings. 7. The developer reserves the right to make revisions/ alterations, at its absolute discretion, without any liability whatsoever.

2 BEDROOM APARTMENT

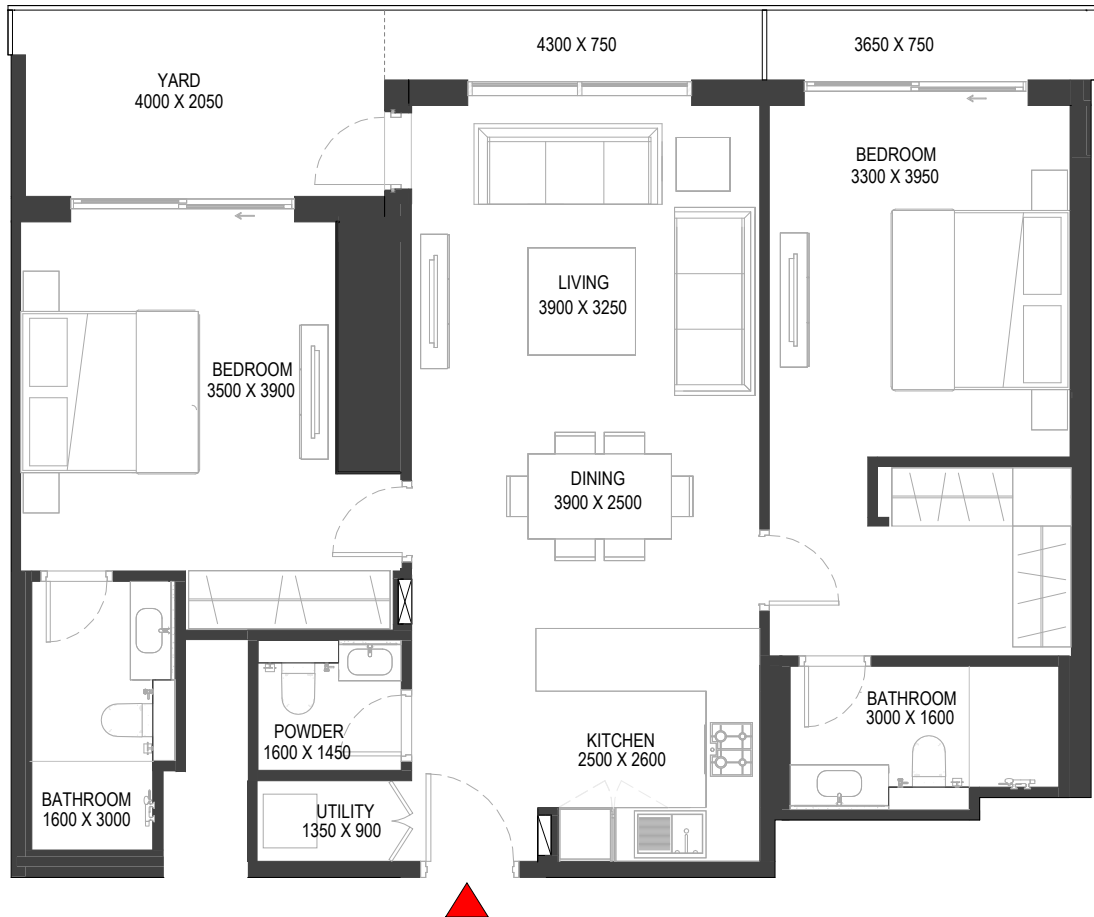
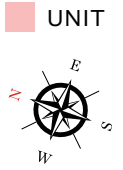
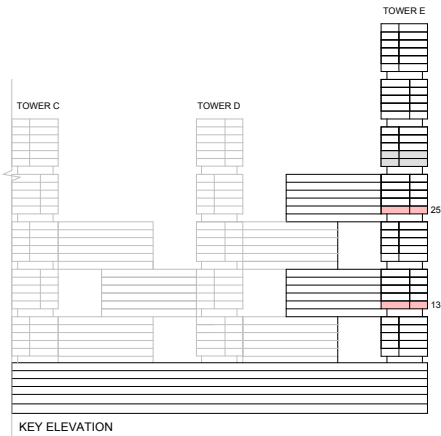
TYPE P (with powder room + yard) VARIANT 2

TOTAL SALEABLE AREA

SUITE = 1,035.81 SQ.FT.

YARD = 177.82 SQ.FT.

TOTAL = 1,213.63 SQ.FT.



List of unit numbers with this unit plan:

VIEWS

Golf Course, Creek, Amenities

E1310

Golf Course, Creek

E2510

Disclaimer: 1. All dimensions are in metric, measured to wall finishes. 2. All materials, dimensions & drawings are approximate. 3. Information is subject to change without notice, at developer's absolute discretion. 4. Actual area may vary from the stated area. 5. Drawing are not to scale. 6. All images used are for illustrative purpose only and do not represent the actual size, features, specifications, fittings and furnishings. 7. The developer reserves the right to make revisions/ alterations, at its absolute discretion, without any liability whatsoever.

2 BEDROOM APARTMENT

TYPE P (with powder room + yard) VARIANT 2

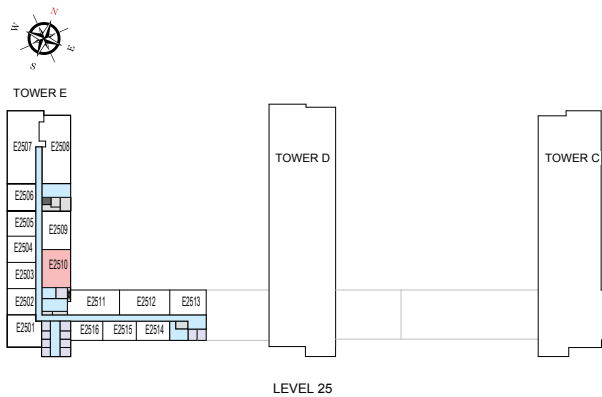
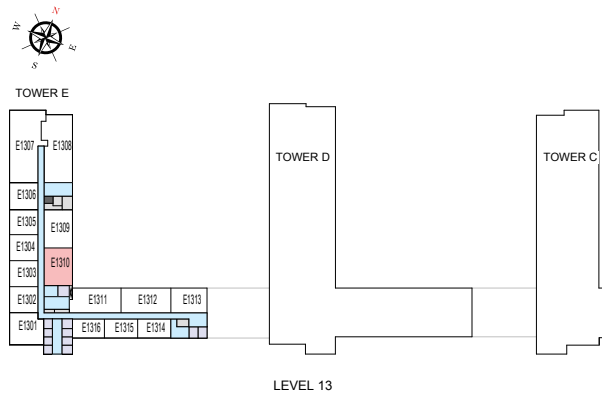
TOTAL SALEABLE AREA

SUITE = 1,035.81 SQ.FT.

YARD = 177.82 SQ.FT.

TOTAL = 1,213.63 SQ.FT.

 UNIT



List of unit numbers with this unit plan:

VIEWS

Golf Course, Creek, Amenities

E1310

Golf Course, Creek

E2510

Disclaimer: 1. All dimensions are in metric, measured to wall finishes. 2. All materials, dimensions & drawings are approximate. 3. Information is subject to change without notice, at developer's absolute discretion. 4. Actual area may vary from the stated area. 5. Drawing are not to scale. 6. All images used are for illustrative purpose only and do not represent the actual size, features, specifications, fittings and furnishings. 7. The developer reserves the right to make revisions/ alterations, at its absolute discretion, without any liability whatsoever.

TOWER E

UNIT PLAN LAYOUTS
(LINK UNITS)

2 BEDROOM LINK APARTMENT

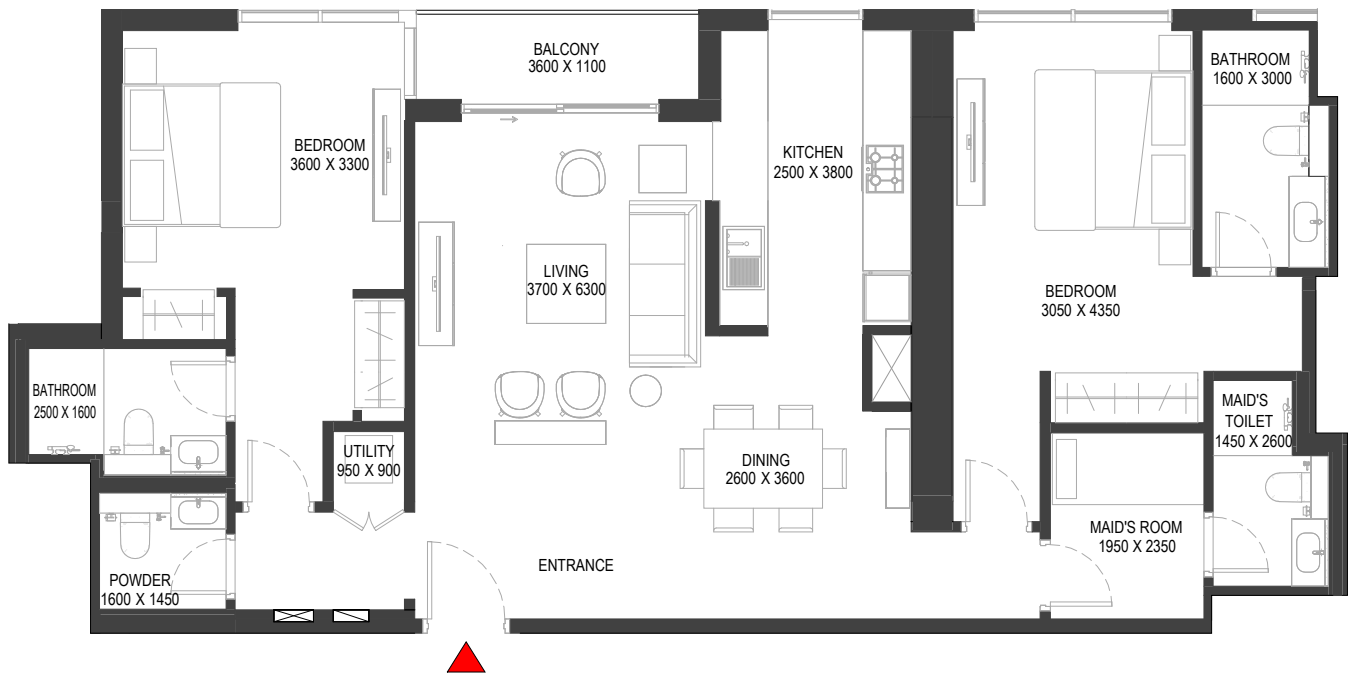
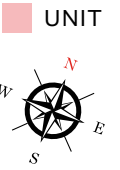
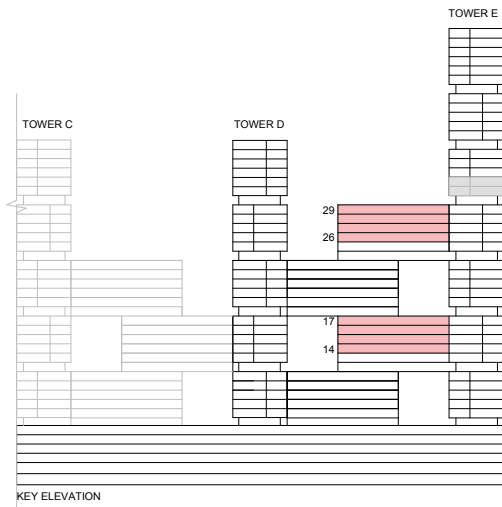
TYPE D (with maid room, powder room + balcony) VARIANT 3

TOTAL SALEABLE AREA

SUITE = 1,262.39 SQ.FT.

BALCONY = 49.73 SQ.FT.

TOTAL = 1,312.12 SQ.FT.



List of unit numbers with this unit plan:

VIEWS

Golf Course, Creek, Amenities

E1411, E1511, E1611, E1711

Golf Course, Creek

E2611, E2711, E2811, E2911

Disclaimer: 1. All dimensions are in metric, measured to wall finishes. 2. All materials, dimensions & drawings are approximate. 3. Information is subject to change without notice, at developer's absolute discretion. 4. Actual area may vary from the stated area. 5. Drawing are not to scale. 6. All images used are for illustrative purpose only and do not represent the actual size, features, specifications, fittings and furnishings. 7. The developer reserves the right to make revisions/ alterations, at its absolute discretion, without any liability whatsoever.

2 BEDROOM LINK APARTMENT

TYPE D (with maid room, powder room + balcony) VARIANT 3

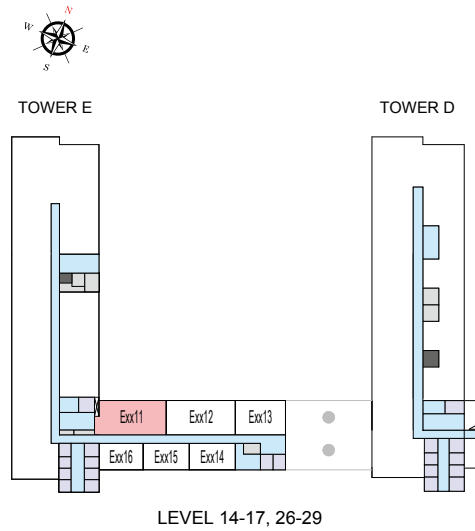
TOTAL SALEABLE AREA

SUITE = 1,262.39 SQ.FT.

BALCONY = 49.73 SQ.FT.

TOTAL = 1,312.12 SQ.FT.

 UNIT



List of unit numbers with this unit plan:

VIEWS

Golf Course, Creek, Amenities

E1411, E1511, E1611, E1711

Golf Course, Creek

E2611, E2711, E2811, E2911

Disclaimer: 1. All dimensions are in metric, measured to wall finishes. 2. All materials, dimensions & drawings are approximate. 3. Information is subject to change without notice, at developer's absolute discretion. 4. Actual area may vary from the stated area. 5. Drawing are not to scale. 6. All images used are for illustrative purpose only and do not represent the actual size, features, specifications, fittings and furnishings. 7. The developer reserves the right to make revisions/ alterations, at its absolute discretion, without any liability whatsoever.

2 BEDROOM LINK APARTMENT

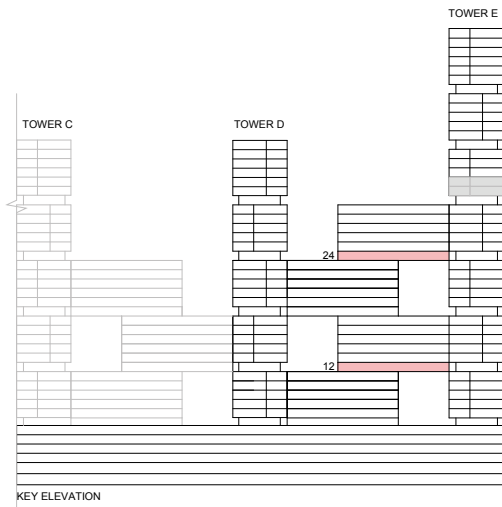
TYPE H (with maid room, powder room + yard) VARIANT 3

TOTAL SALEABLE AREA

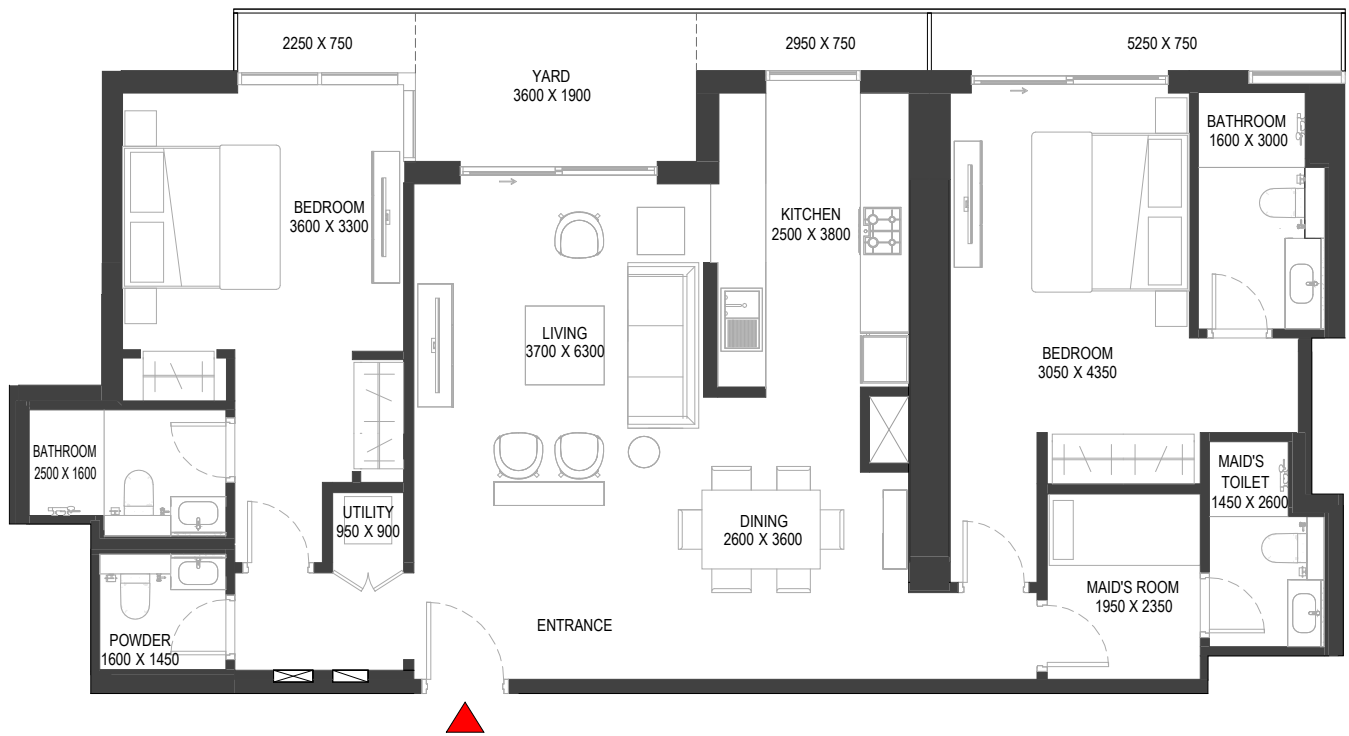
SUITE = 1,262.39 SQ.FT.

YARD = 175.02 SQ.FT.

TOTAL = 1,437.41 SQ.FT.



UNIT



List of unit numbers with this unit plan:

VIEWS

Golf Course, Creek, Amenities

E1211, E2411

Disclaimer: 1. All dimensions are in metric, measured to wall finishes. 2. All materials, dimensions & drawings are approximate. 3. Information is subject to change without notice, at developer's absolute discretion. 4. Actual area may vary from the stated area. 5. Drawing are not to scale. 6. All images used are for illustrative purpose only and do not represent the actual size, features, specifications, fittings and furnishings. 7. The developer reserves the right to make revisions/ alterations, at its absolute discretion, without any liability whatsoever.

2 BEDROOM LINK APARTMENT

TYPE H (with maid room, powder room + yard) VARIANT 3

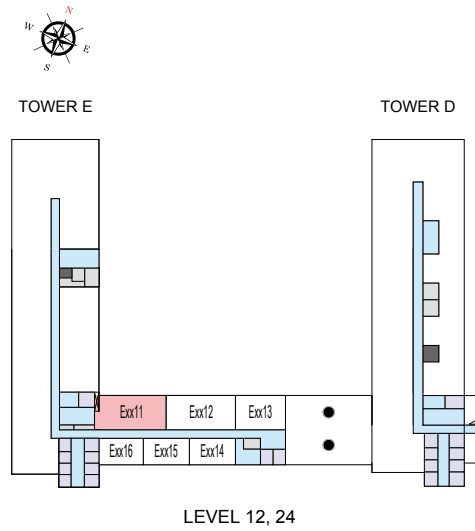
TOTAL SALEABLE AREA

SUITE = 1,262.39 SQ.FT.

YARD = 175.02 SQ.FT.

TOTAL = 1,437.41 SQ.FT.

 UNIT



List of unit numbers with this unit plan:

VIEWS

Golf Course, Creek, Amenities

E1211, E2411

Disclaimer: 1. All dimensions are in metric, measured to wall finishes. 2. All materials, dimensions & drawings are approximate. 3. Information is subject to change without notice, at developer's absolute discretion. 4. Actual area may vary from the stated area. 5. Drawing are not to scale. 6. All images used are for illustrative purpose only and do not represent the actual size, features, specifications, fittings and furnishings. 7. The developer reserves the right to make revisions/ alterations, at its absolute discretion, without any liability whatsoever.

2 BEDROOM LINK APARTMENT

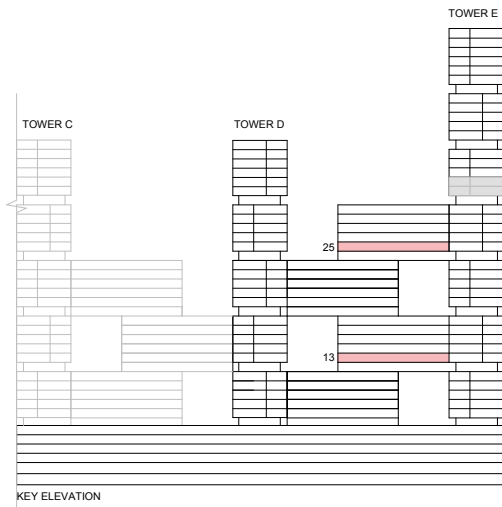
TYPE M (with maid room, powder room + yard) VARIANT 3

TOTAL SALEABLE AREA

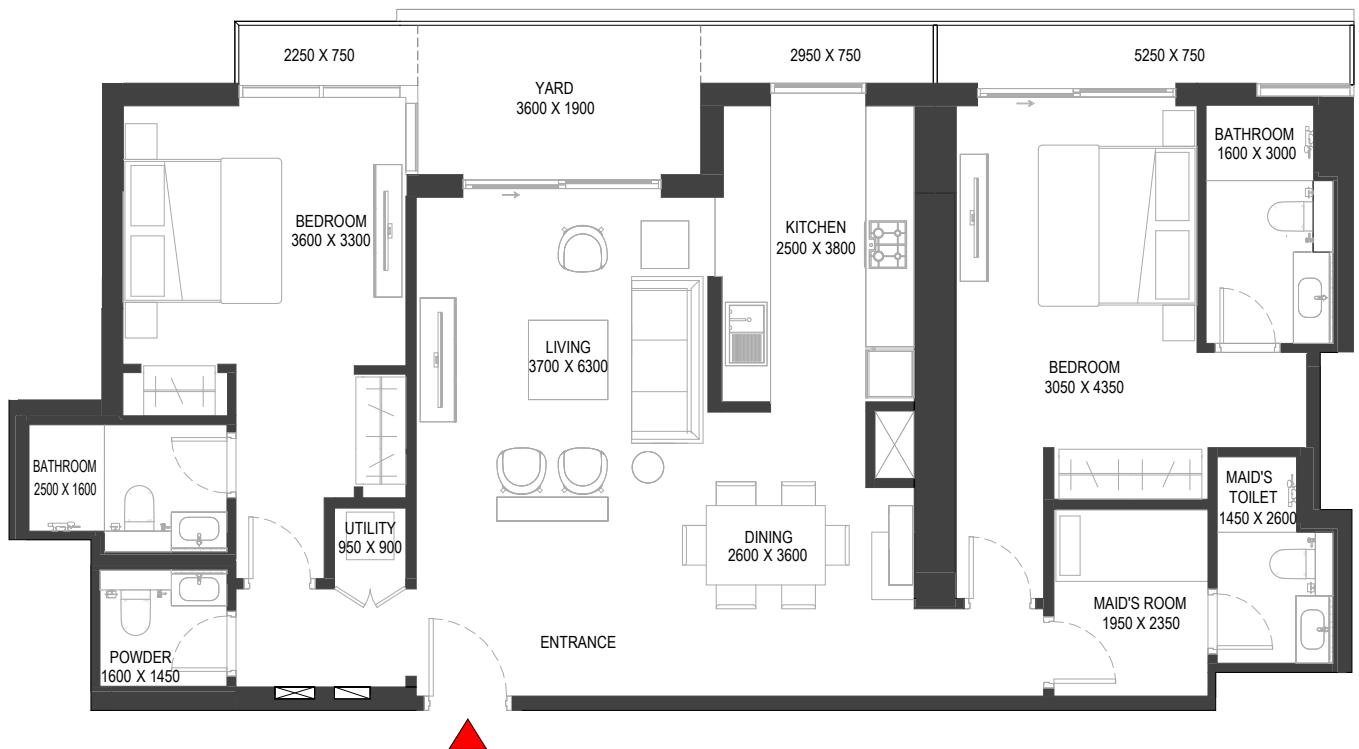
SUITE = 1,262.39 SQ.FT.

YARD = 175.02 SQ.FT.

TOTAL = 1,437.41 SQ.FT.



UNIT



List of unit numbers with this unit plan:

VIEWS

Golf Course, Creek, Amenities

E1311

Golf Course, Creek

E2511

Disclaimer: 1. All dimensions are in metric, measured to wall finishes. 2. All materials, dimensions & drawings are approximate. 3. Information is subject to change without notice, at developer's absolute discretion. 4. Actual area may vary from the stated area. 5. Drawing are not to scale. 6. All images used are for illustrative purpose only and do not represent the actual size, features, specifications, fittings and furnishings. 7. The developer reserves the right to make revisions/ alterations, at its absolute discretion, without any liability whatsoever.

2 BEDROOM LINK APARTMENT

TYPE M (with maid room, powder room + yard) VARIANT 3

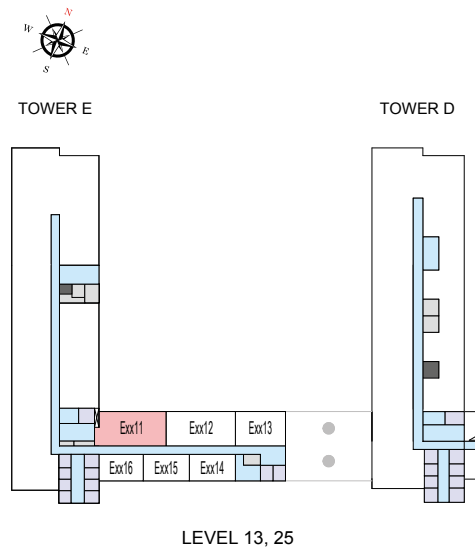
TOTAL SALEABLE AREA

SUITE = 1,262.39 SQ.FT.

YARD = 175.02 SQ.FT.

TOTAL = 1,437.41 SQ.FT.

 UNIT



List of unit numbers with this unit plan:

VIEWS

Golf Course, Creek, Amenities

E1311

Golf Course, Creek

E2511

Disclaimer: 1. All dimensions are in metric, measured to wall finishes. 2. All materials, dimensions & drawings are approximate. 3. Information is subject to change without notice, at developer's absolute discretion. 4. Actual area may vary from the stated area. 5. Drawing are not to scale. 6. All images used are for illustrative purpose only and do not represent the actual size, features, specifications, fittings and furnishings. 7. The developer reserves the right to make revisions/ alterations, at its absolute discretion, without any liability whatsoever.



SOBHA ONE

SOBHA
REALTY